

PRO LUCHS Fachtagung, Linz, 11. Oktober 2019

Dr. Anja Molinari-Jobin

## Der Luchs im Alpenraum: aktuelle Situation und Zukunftsperspektiven





# KORA

Koordinierte Forschungsprojekte zur Erhaltung und zum Management der Raubtiere in der Schweiz.  
Coordinated research projects for the conservation and management of carnivores in Switzerland.  
Projets de recherches coordonnés pour la conservation et la gestion des carnivores en Suisse



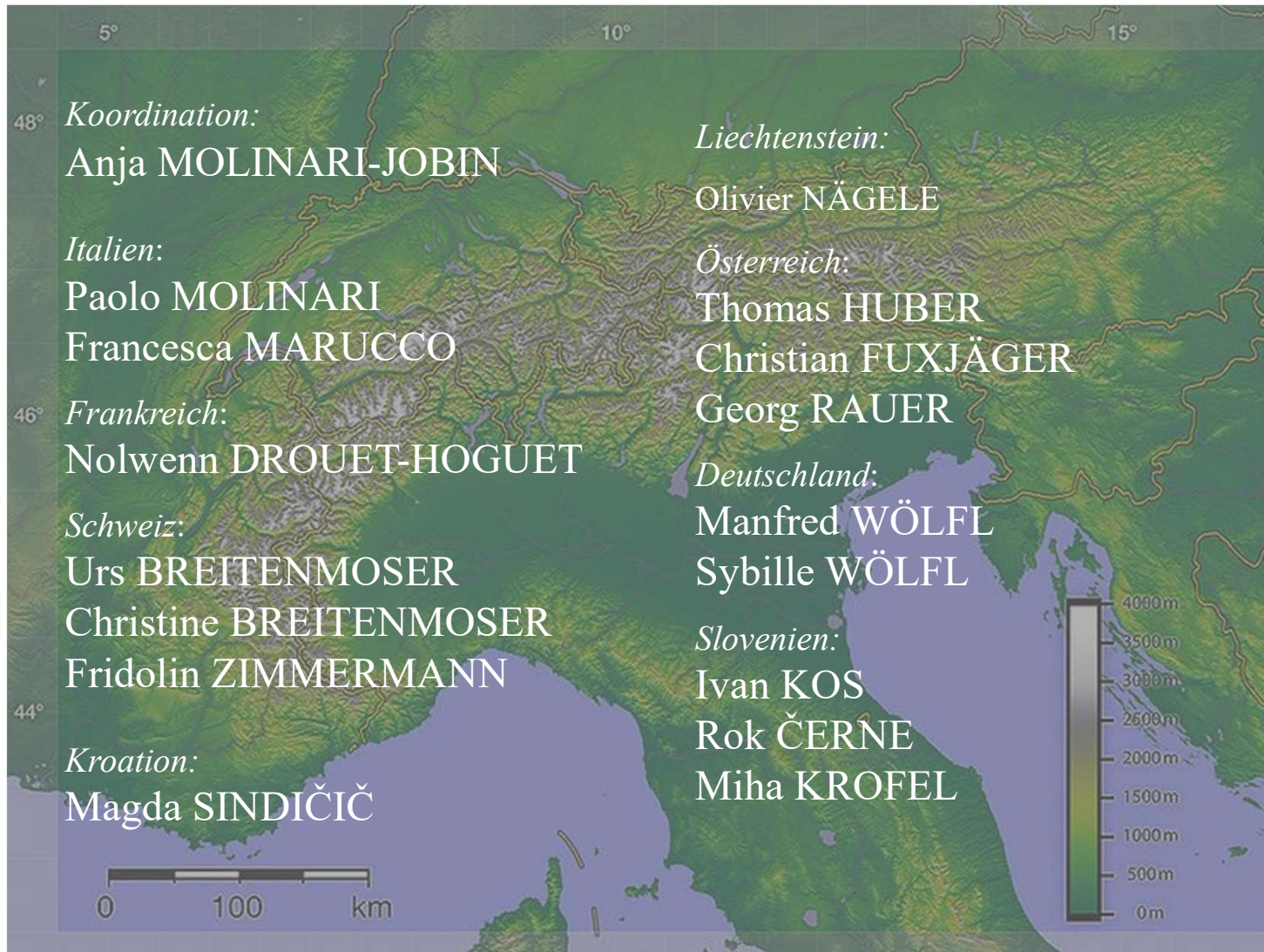
1991-1998	Feldassistentin Luchsprojekt Schweiz
1996-1998	Doktorarbeit „Einfluss Luchs auf Beutetiere“
1998-bis heute	Progetto Lince Italia
1999-2007	Monitoring Luchs Schweiz
1999-bis heute	SCALP Koordination
2007-bis heute	Monitoring Luchs und Bär Italien

**Status and Conservation  
of the Alpine Lynx  
Population**



**SCALP**

The graphic features a stylized mountain range in grey with two peaks topped with tufts of grass. Below the mountains, the word "SCALP" is written in large, bold, yellow letters with a black drop shadow.

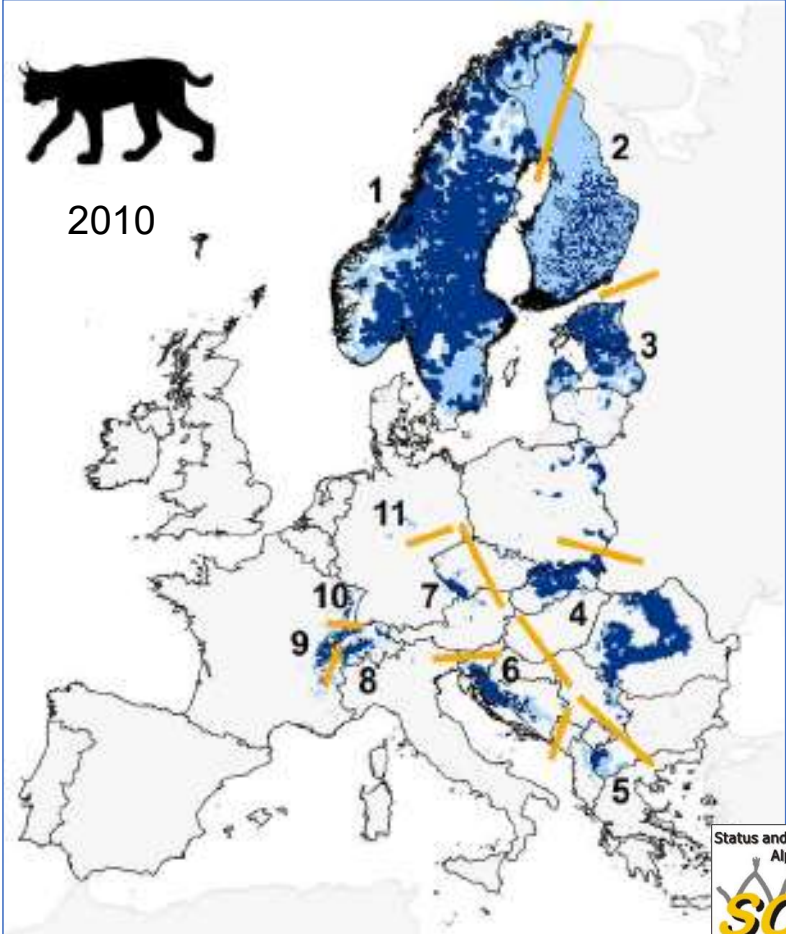
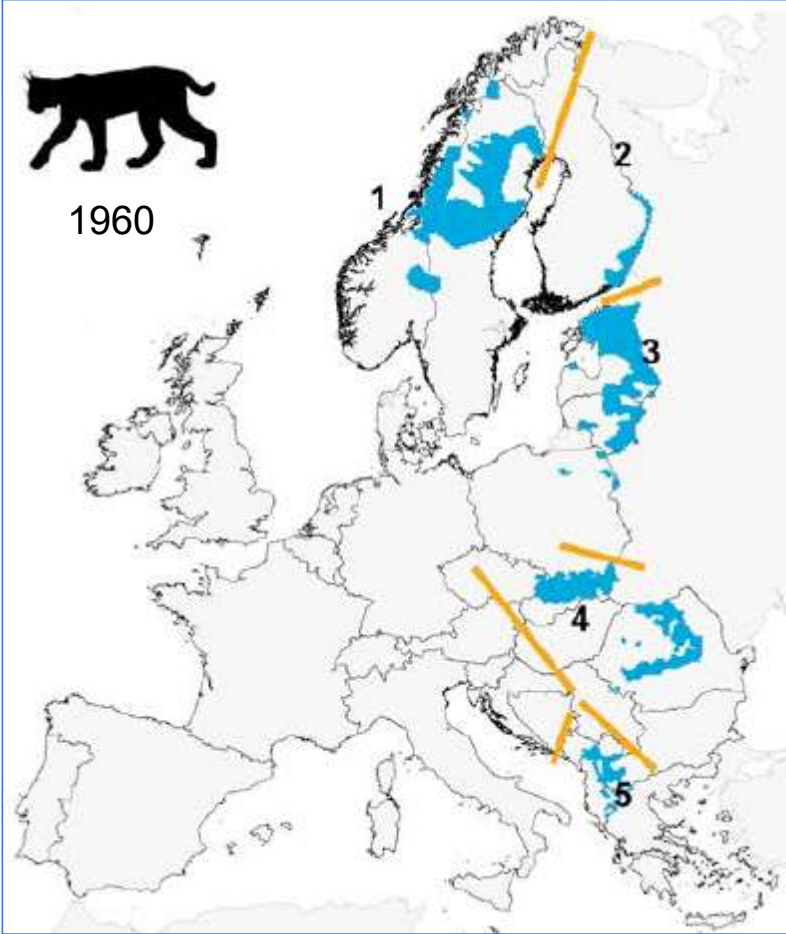




## Drei Fragen

1. Woher kommen wir?  
→ *Geschichte*
2. Wo stehen wir heute?  
→ *Aktuelle Situation des Luchses in den Alpen*
3. Wohin wollen wir?  
→ *Diskussion*

# Eine Erfolgsgeschichte...



## II

(Acts whose publication is not obligatory)

## COUNCIL

## COUNCIL DIRECTIVE 92/43/EEC

of 21 May 1992

on the conservation of natural habitats and of wild fauna and flora

THE COUNCIL OF THE EUROPEAN COMMUNITIES,

Having regard to the Treaty establishing the European Economic Community, and in particular Article 130a thereof,

Having regard to the proposal from the Commission <sup>(1)</sup>,

Having regard to the opinion of the European Parliament <sup>(2)</sup>,

Having regard to the opinion of the Economic and Social Committee <sup>(3)</sup>,

Whereas the preservation, protection and improvement of the quality of the environment, including the conservation of natural habitats and of wild fauna and flora, are an essential objective of general interest pursued by the Community, as stated in Article 130r of the Treaty;

Whereas the European Community policy and action programme on the environment (1987 to 1992) <sup>(4)</sup> makes provision for measures regarding the conservation of nature and natural resources;

Whereas, the main aim of this Directive being to promote the maintenance of biodiversity, taking account of economic, social, cultural and regional requirements, this Directive makes a contribution to the general objective of sustainable development; whereas the maintenance of such biodiversity may in certain cases require the maintenance, or indeed the encouragement, of human activities;

Whereas, in the European territory of the Member States, natural habitats are continuing to deteriorate and an increasing number of wild species are seriously threatened; whereas given that the threatened habitats and species form part of the Community's natural heritage and the threats to them are often of a transboundary nature, it is necessary to take measures at Community level in order to conserve them;

Whereas, in view of the threats to certain types of natural habitat and certain species, it is necessary to define them as having priority in order to favour the early implementation of measures to conserve them;

Whereas, in order to ensure the restoration or maintenance of natural habitats and species of Community interest at a favourable conservation status, it is necessary to designate special areas of conservation in order to create a coherent European ecological network according to a specified timetable;

Whereas all the areas designated, including those classified now or in the future as special protection areas pursuant to Council Directive 79/409/EEC of 2 April 1979 on the conservation of wild birds <sup>(5)</sup>, will have to be incorporated into the coherent European ecological network;

Whereas it is appropriate, in each area designated, to implement the necessary measures having regard to the conservation objectives pursued;

Whereas sites eligible for designation as special areas of conservation are proposed by the Member States but whereas

<sup>(1)</sup> OJ No L 103, 25. 4. 1979, p. 1. Directive as last amended by Directive 91/244/EEC [OJ No L 115, 8. 5. 1991, p. 41].

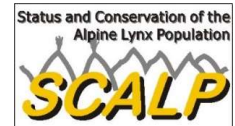
<sup>(1)</sup> OJ No C 247, 21. 9. 1988, p. 3 and

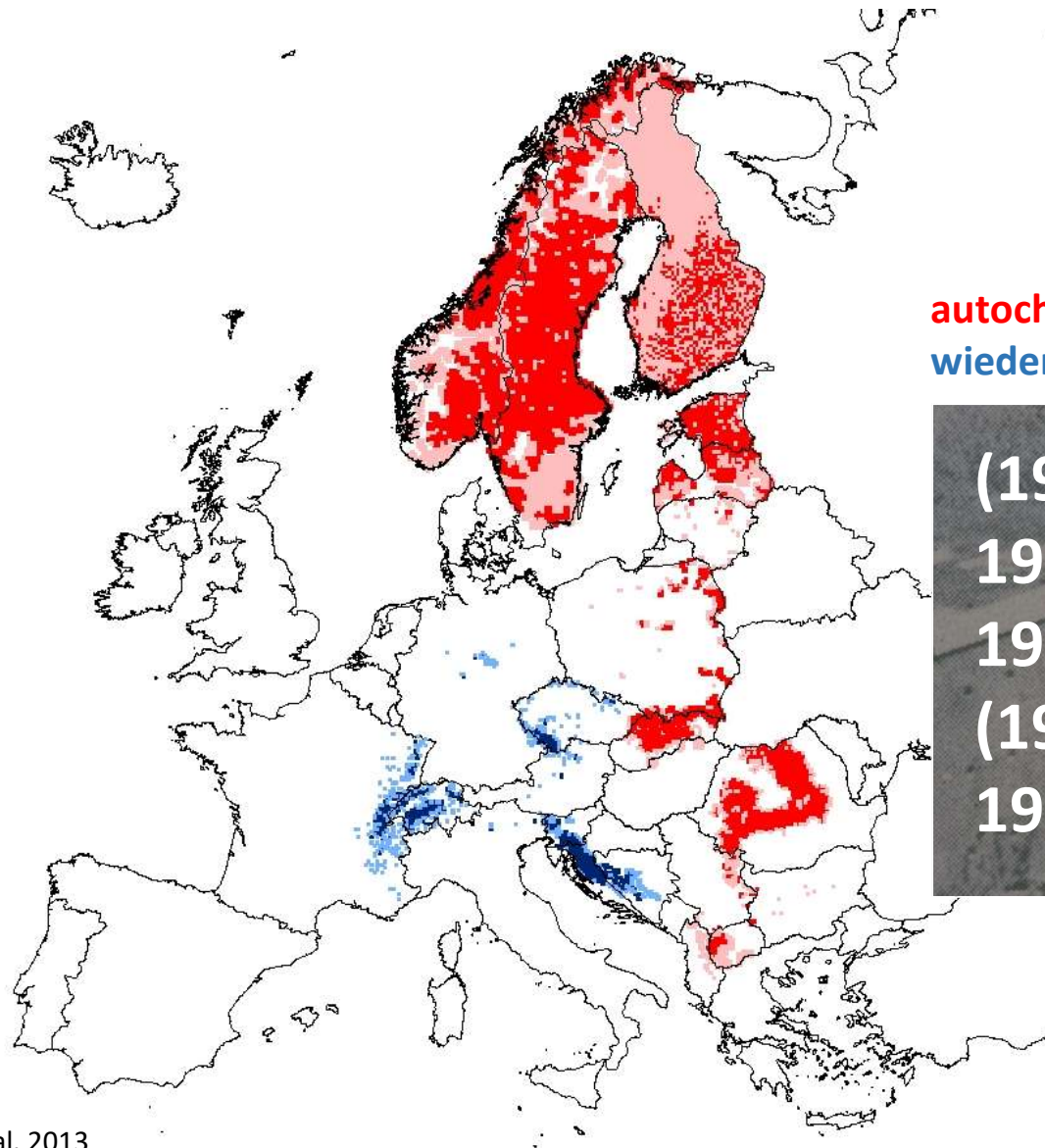
OJ No C 195, 3. 8. 1990, p. 1.

<sup>(2)</sup> OJ No C 75, 20. 3. 1991, p. 12.

<sup>(3)</sup> OJ No C 31, 6. 2. 1991, p. 25.

<sup>(4)</sup> OJ No C 328, 7. 12. 1987, p. 1.





**autochthon**  
**wiederangesiedelt**

(1970 Deutschland)  
1971 Schweiz  
1973 Slowenien  
(1978 Österreich)  
1982 Tschechien



# Schweiz: Übergriffe auf Nutztiere -> Forschung und Monitoring

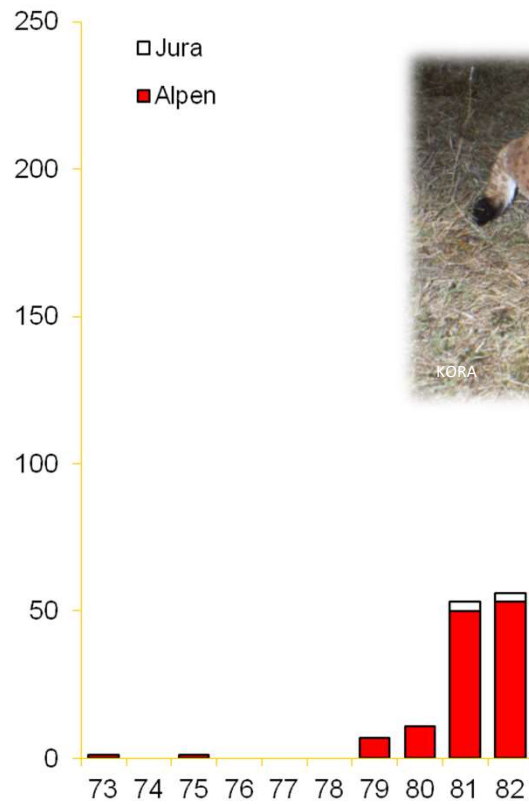


Foto Heinz Wolf

Fam. SMI 840410





## Sammeln von Luchsnachweisen:

- Tote Luchse
- Photos
- Genetisches Material
- Hinweis auf Reproduktion
- Spuren
- Risse
- Direktbeobachtungen
- Rufe



A. Molinari



A. Molinari



A. Molinari

17:17:06

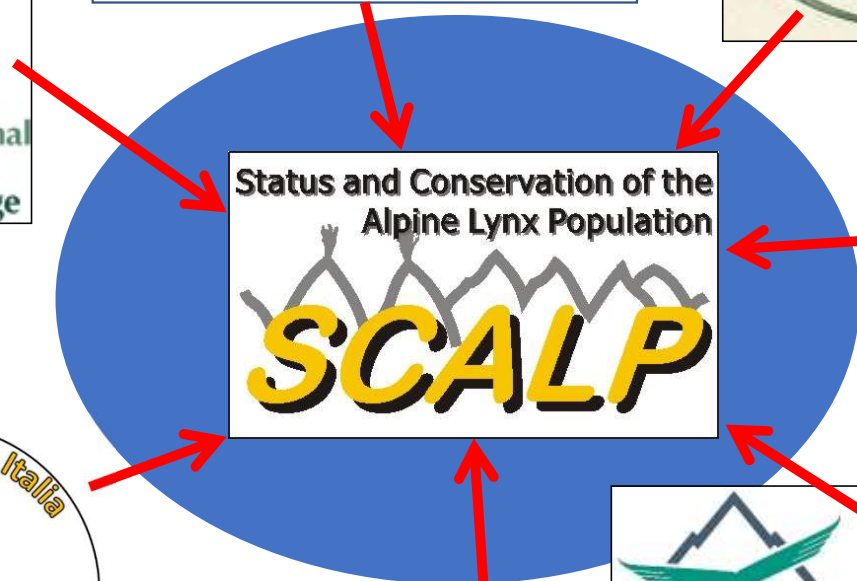
## SCALP Kriterien

Kategorie 1: "hard facts"

Kategorie 2: überprüfte Nachweise

Kategorie 3: nicht überprüfte Nachweise



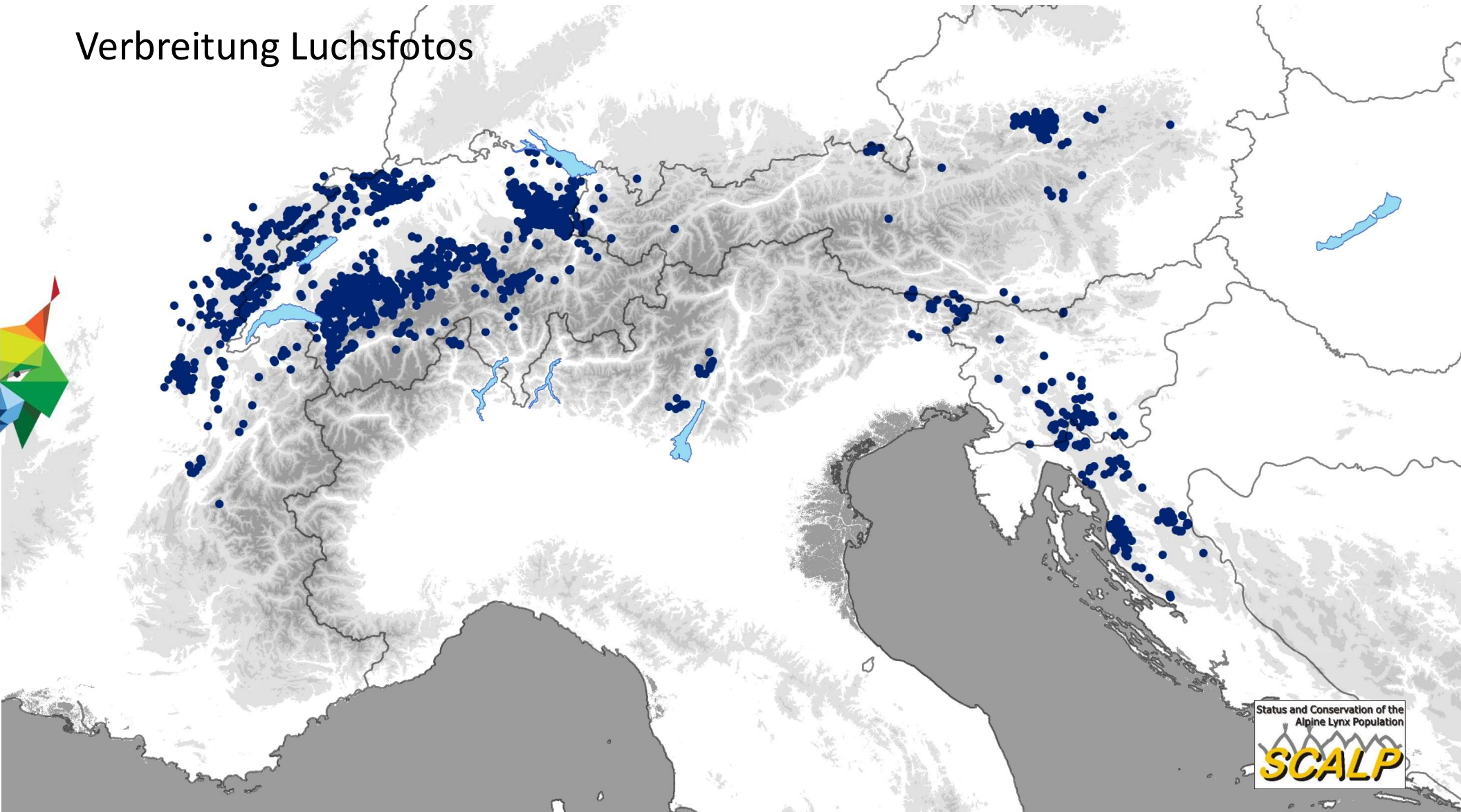








# Verbreitung Luchsfotos







Status and Conservation of the  
Alpine Lynx Population  
**SCALP**



Anja Molinari-Jobin



Anja Molinari-Jobin

Status and Conservation of the  
Alpine Lynx Population  
**SCALP**





Status and Conservation of the  
Alpine Lynx Population  
**SCALP**



Status and Conservation of the  
Alpine Lynx Population  
**SCALP**





Status and Conservation of the  
Alpine Lynx Population  
**SCALP**



## Genetisches Monitoring

DNA von Urin, Speichel, Kot etc

Zusätzlich zur Individuenbestimmung:

- Geschlechtsbestimmung
- Verwandtschaft
- Pedigree

Grosses Potential!



1. Woher kommen wir?

→ *Geschichte*

2. Wo stehen wir heute?

→ *Aktuelle Situation des Luchses in den Alpen*

3. Wohin wollen wir?

→ *Diskussion*

Status and Conservation of the  
Alpine Lynx Population

**SCALP**

2000

Evidence of  
reproduction

C1

Other  
signs

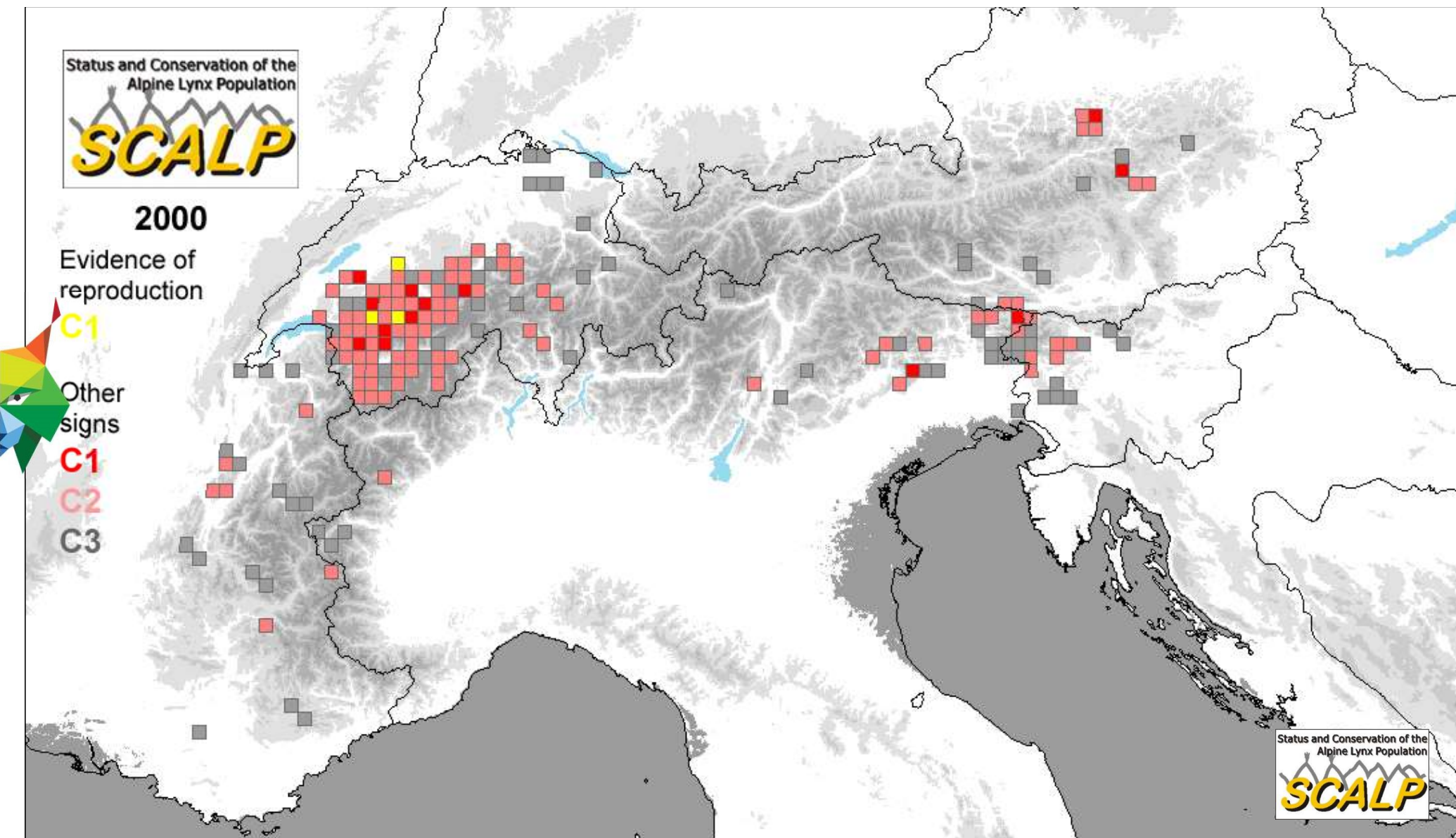
C1

C2

C3

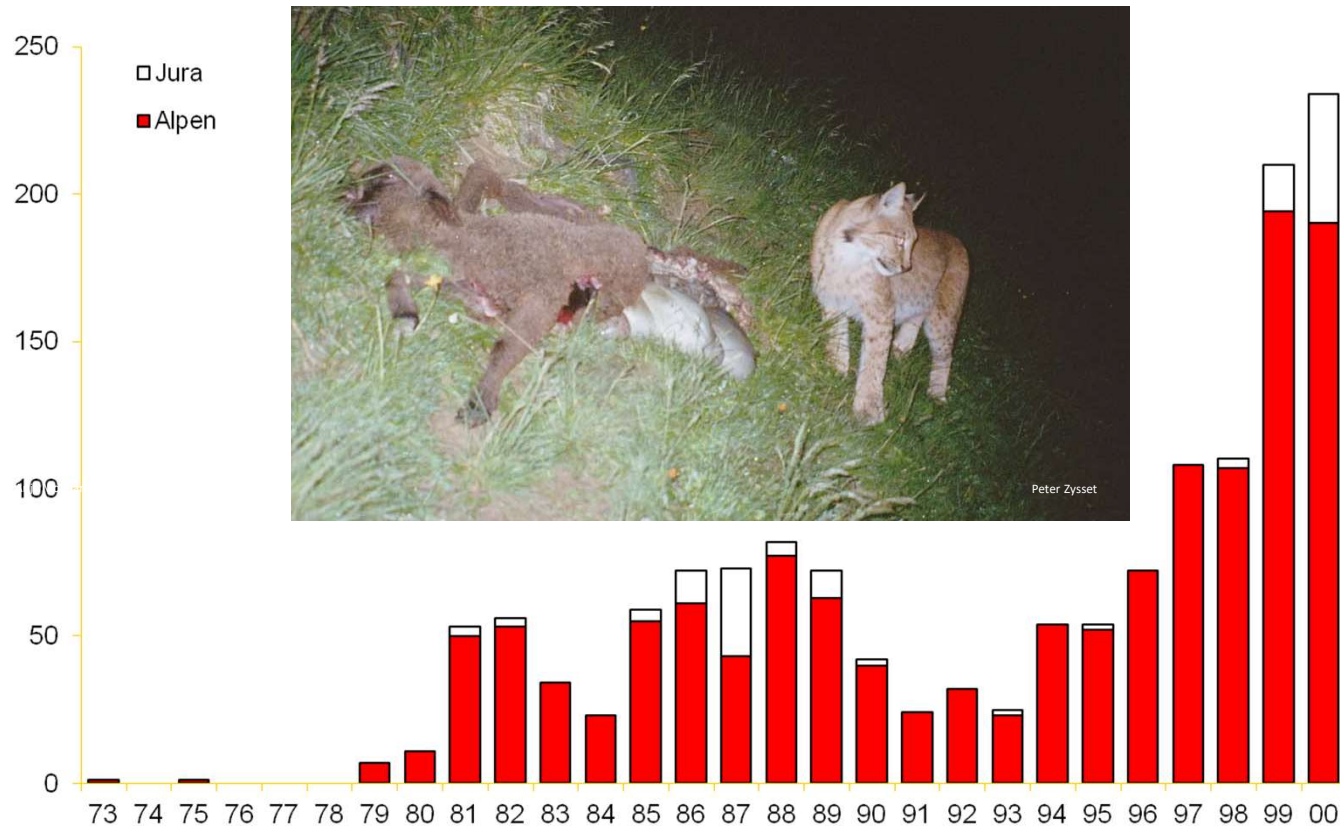
Status and Conservation of the  
Alpine Lynx Population

**SCALP**





# Schweiz: Anstieg Luchsdichte in den Nordwestalpen

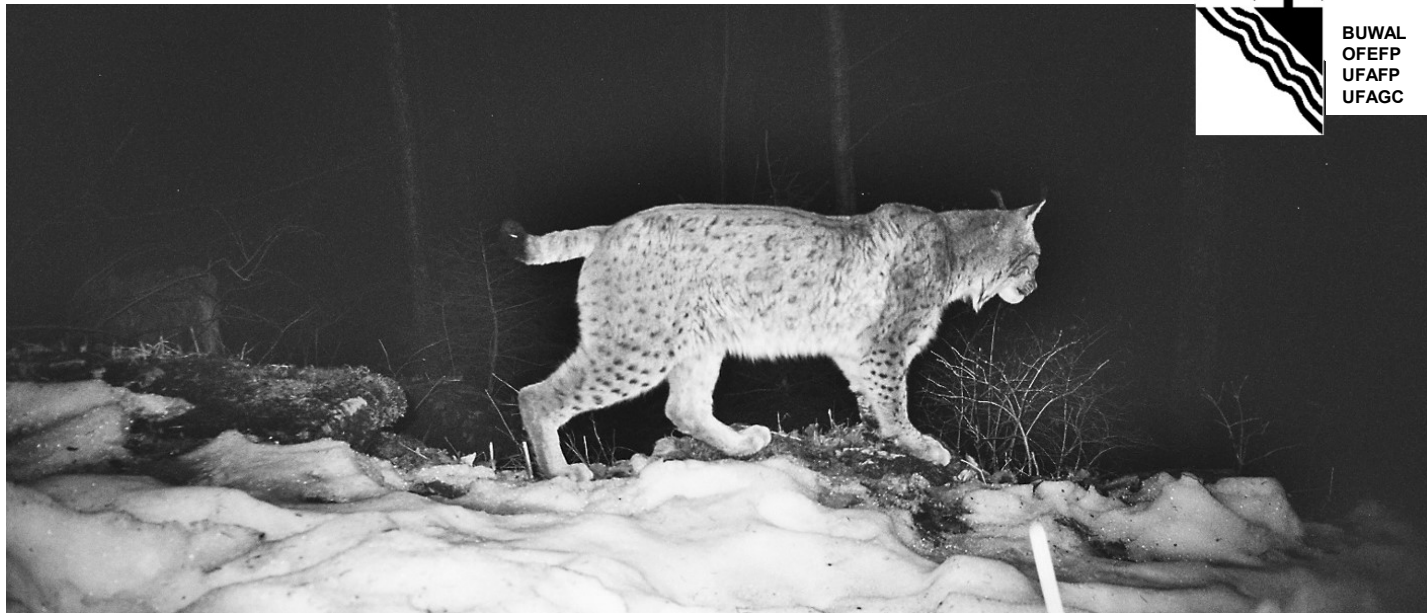
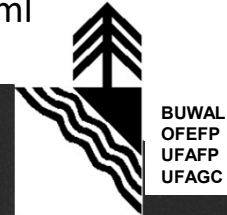




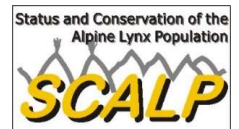


# Konzept Luchs Schweiz

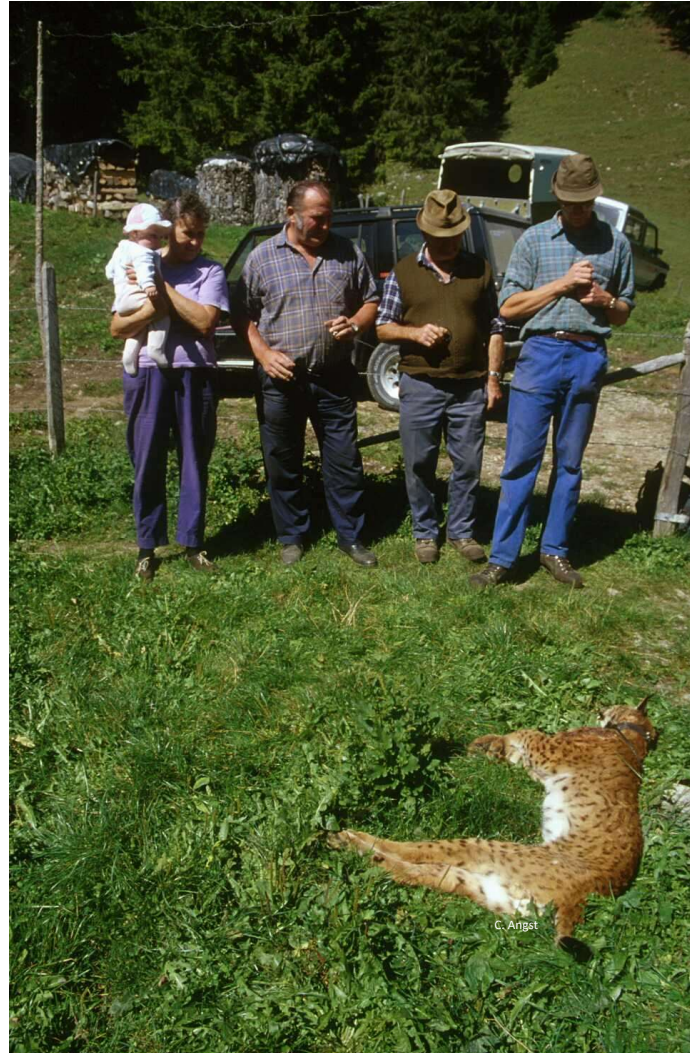
<https://www.bafu.admin.ch/bafu/it/home/temi/biodiversita/publicazioni/publicazioni-biodiversita/strategia-lince-svizzera.html>



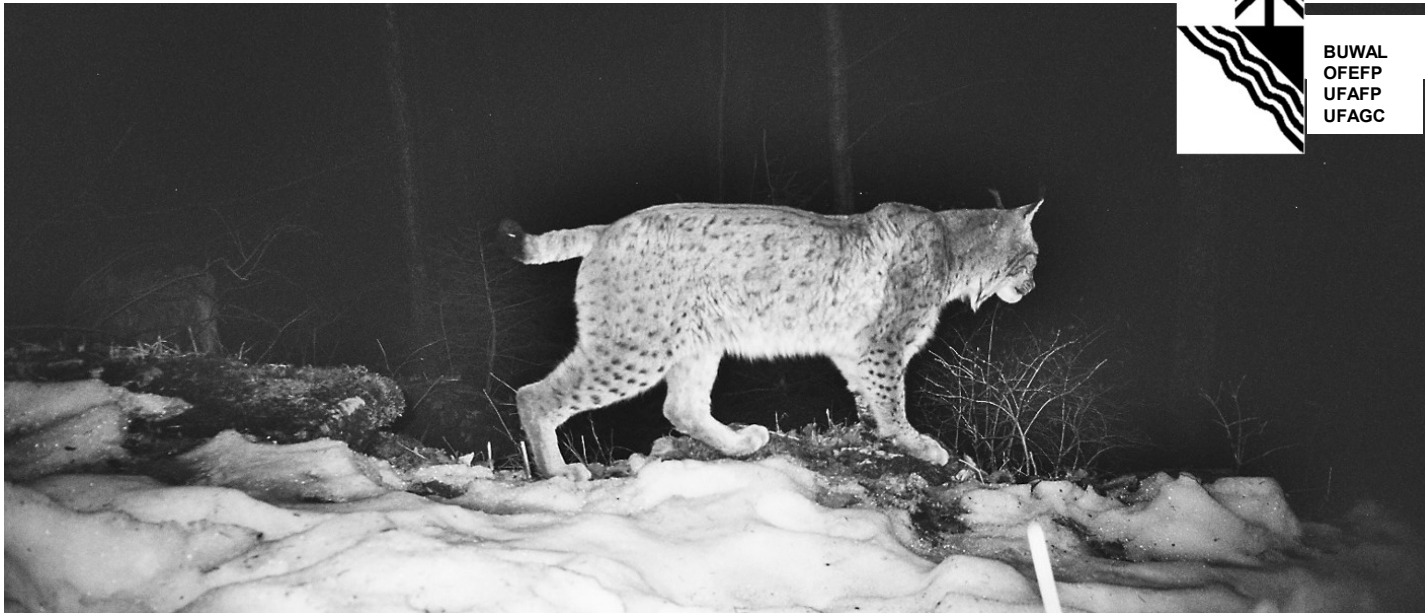
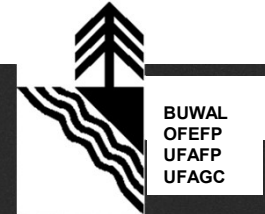
August 2000



# Präventionsmassnahmen



# Konzept Luchs Schweiz

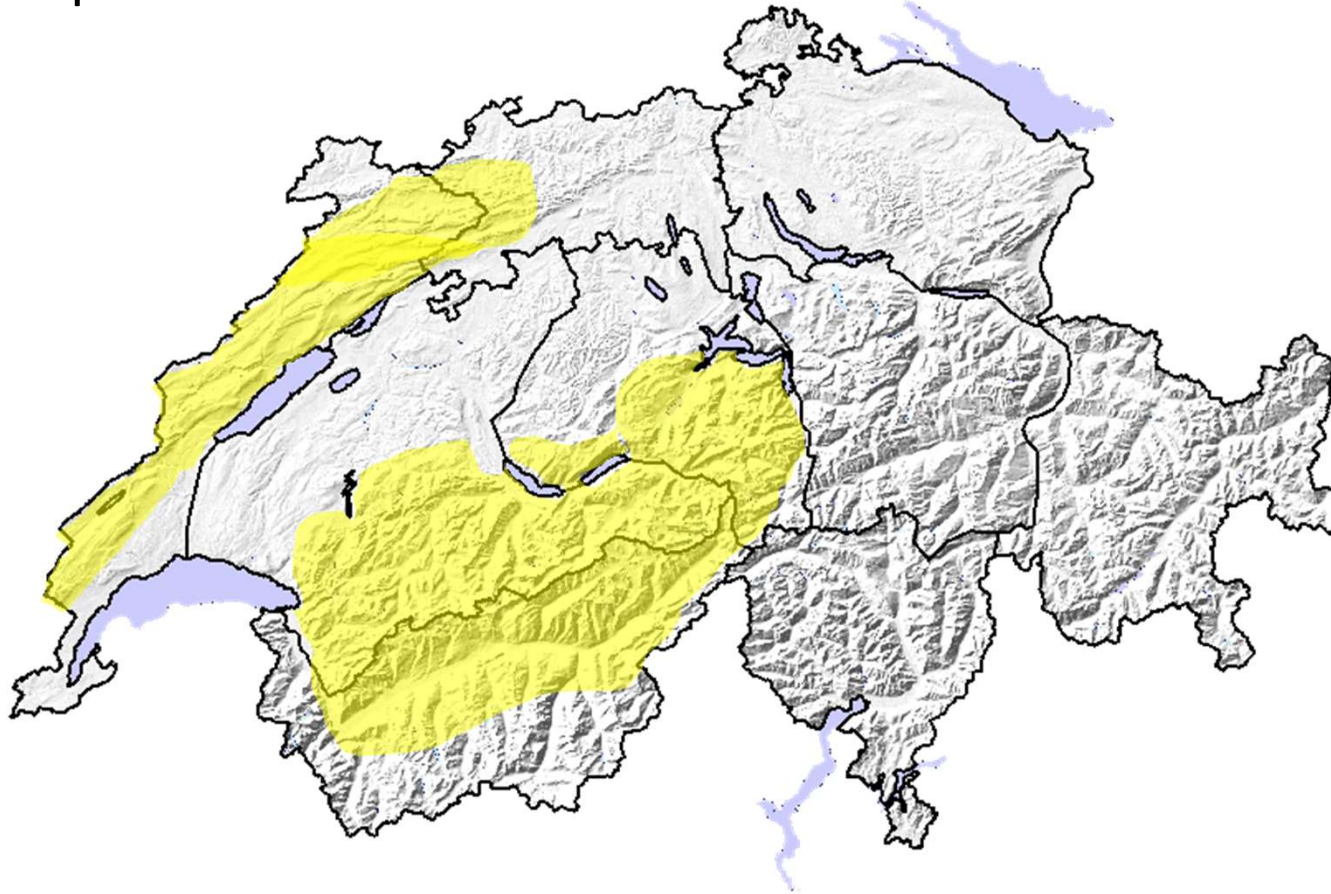


Vermeiden hoher Dichte / Unterstützung der Ausbreitung

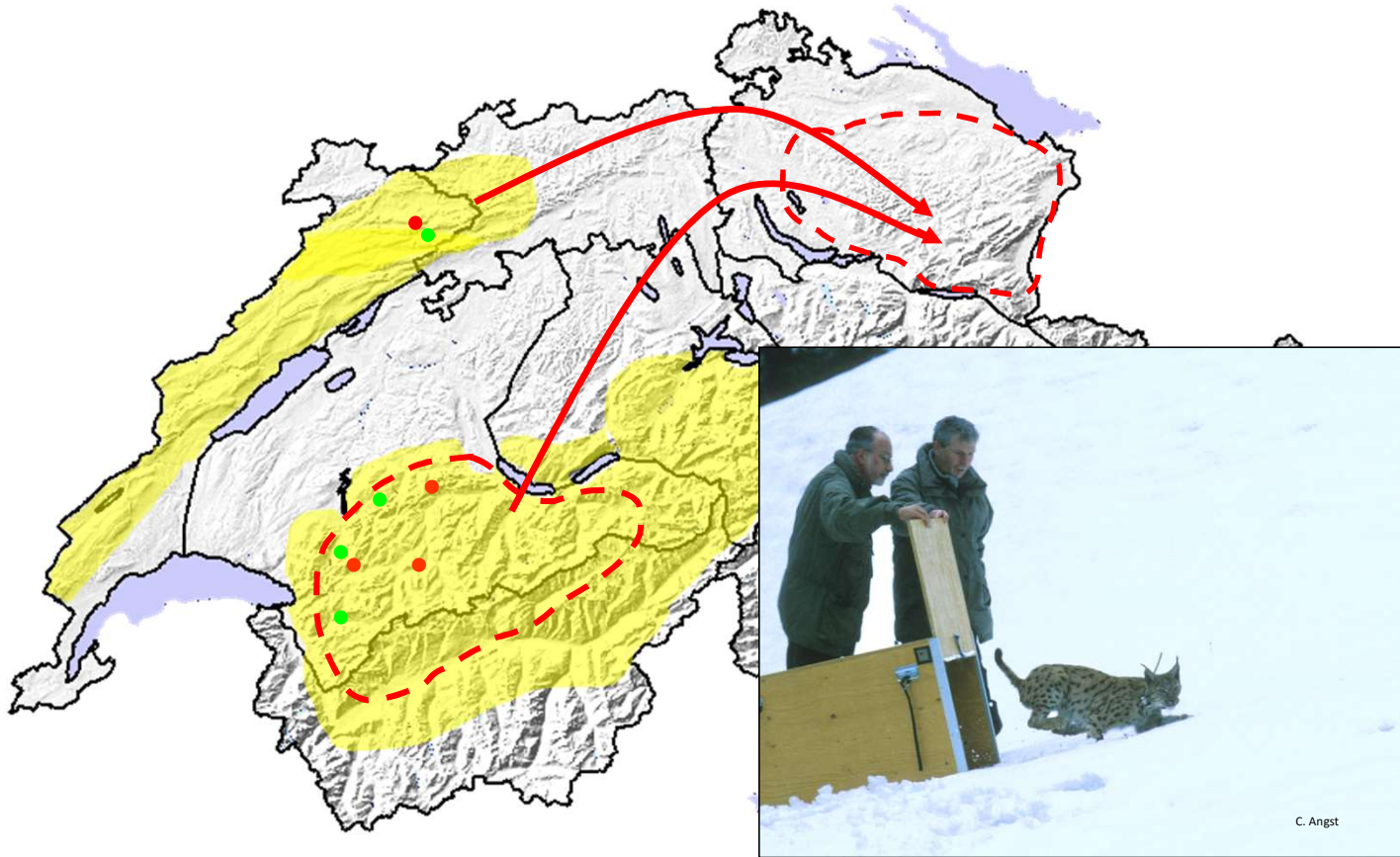


## Konzept Luchs Schweiz:

Westalpen hohe Dichte - Ostschweiz unbesiedelt



# Luchsumsiedlung 2001-2008: 12 Luchse



Status and Conservation of the  
Alpine Lynx Population

**SCALP**

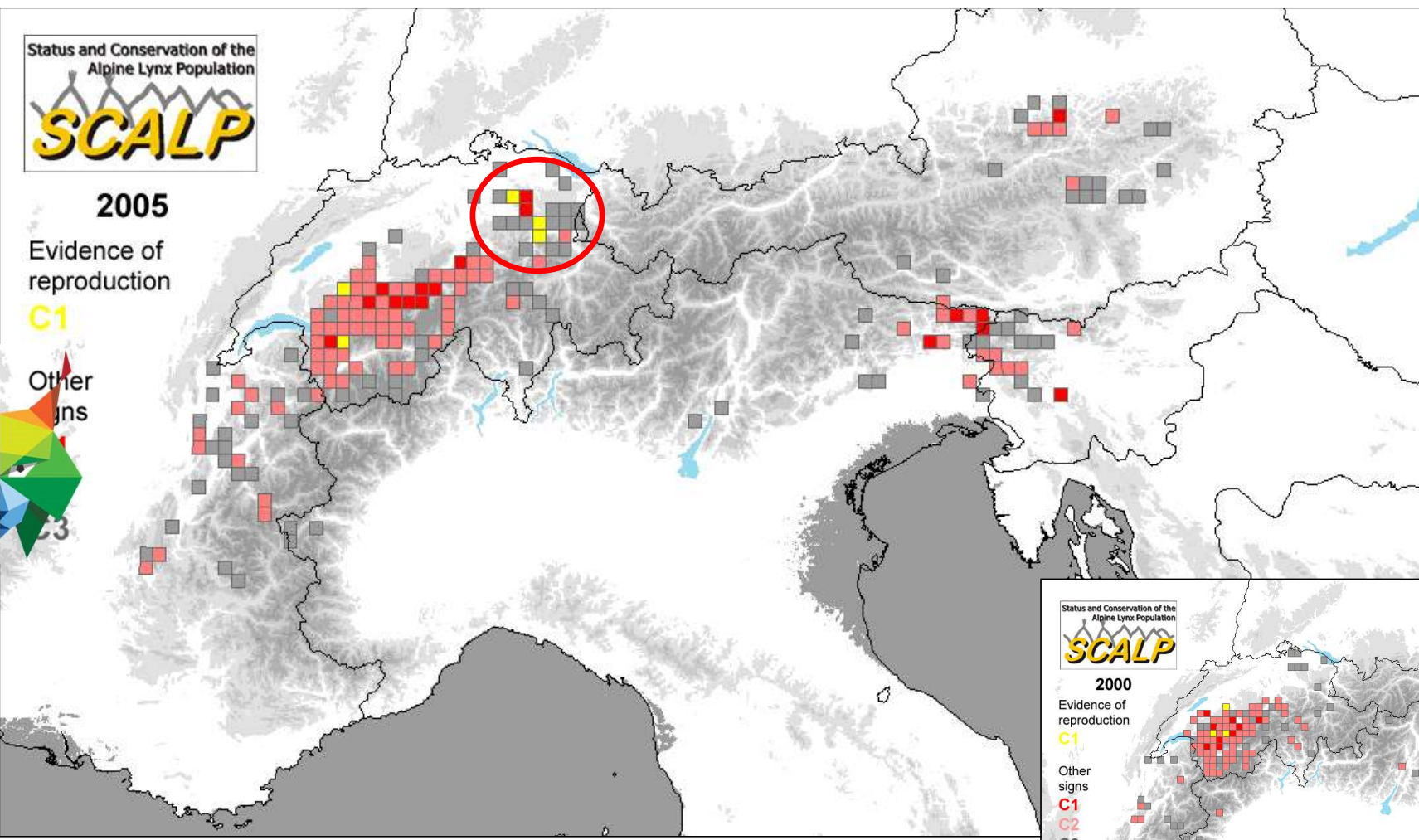
**2005**

Evidence of  
reproduction

C1

Other  
signs

C3



Status and Conservation of the  
Alpine Lynx Population

**SCALP**

**2000**

Evidence of  
reproduction

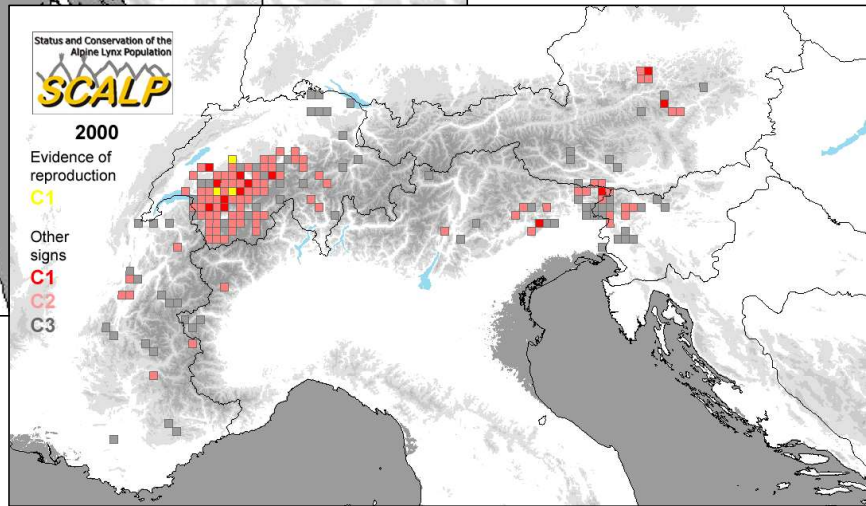
C1

Other  
signs

C1

C2

C3





Status and Conservation of the Alpine Lynx Population

# SCALP

2010

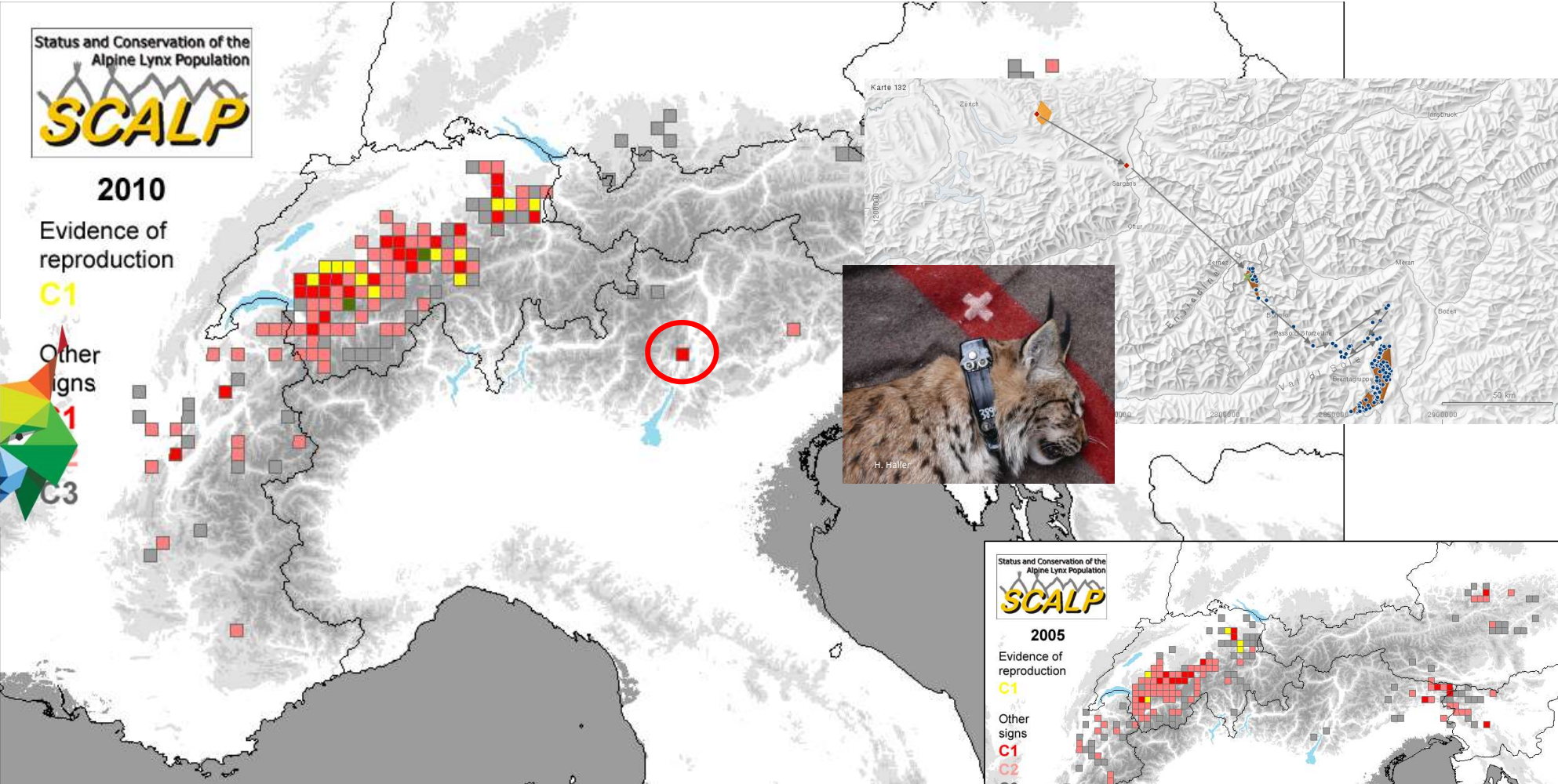
Evidence of reproduction

C1

Other signs

C1

C3



Status and Conservation of the Alpine Lynx Population

# SCALP

2005

Evidence of reproduction

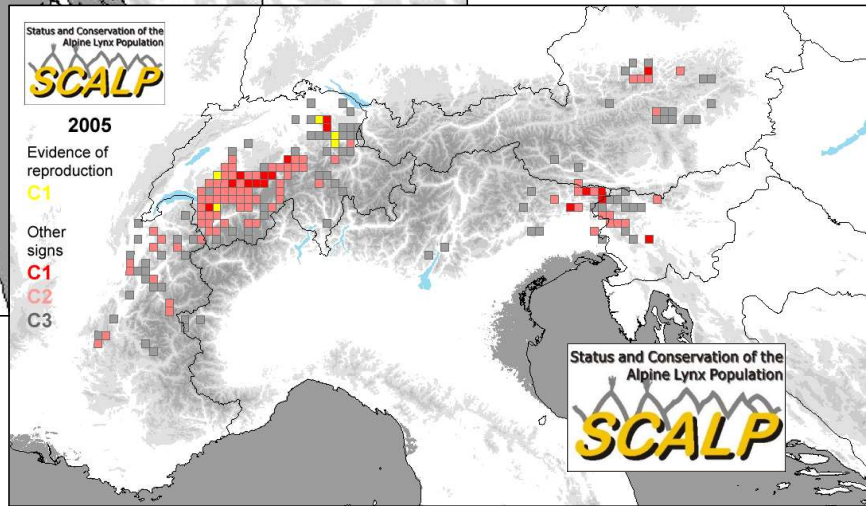
C1

Other signs

C1

C2

C3



Status and Conservation of the Alpine Lynx Population

# SCALP

Status and Conservation of the  
Alpine Lynx Population

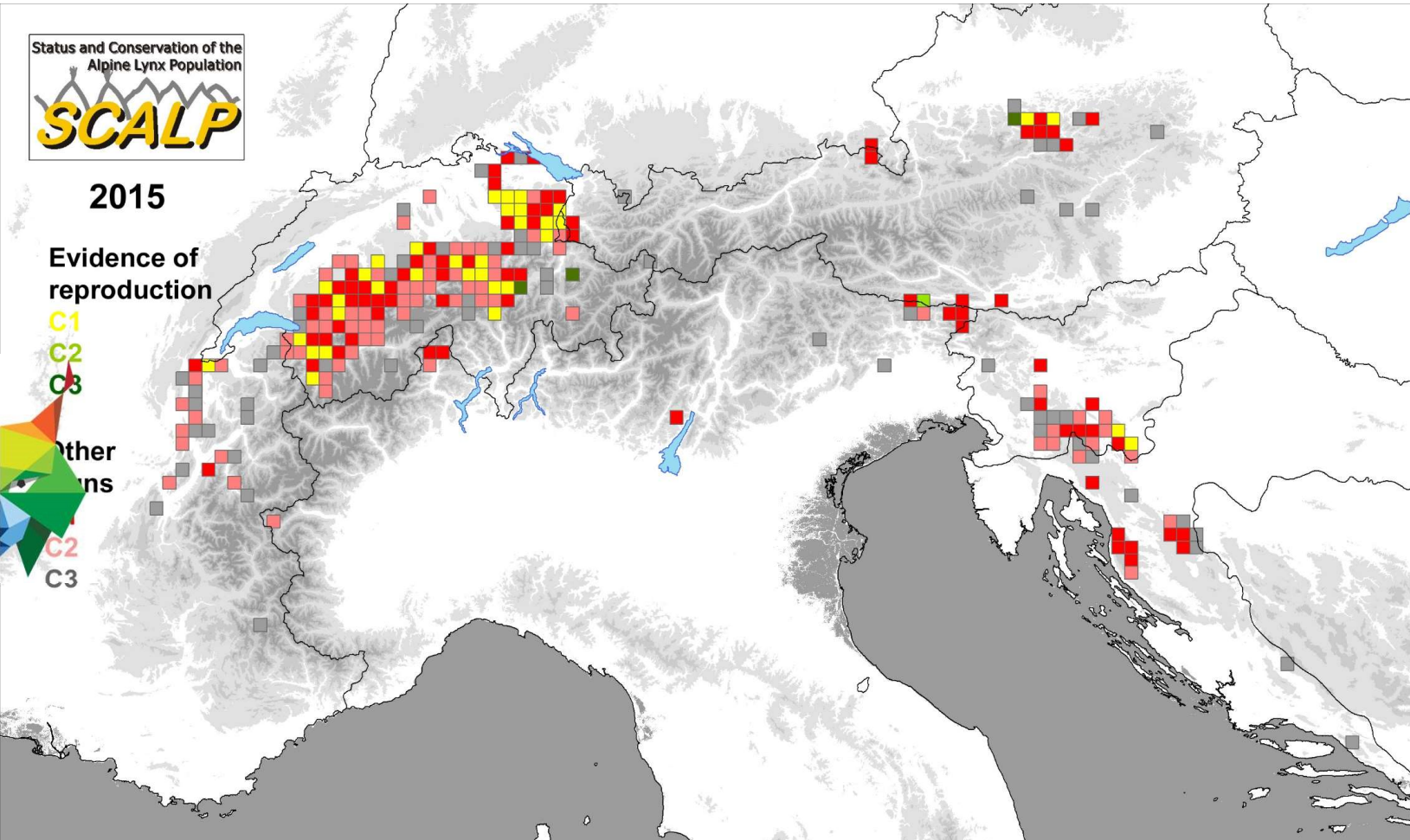
**SCALP**

2015

Evidence of  
reproduction

C1  
C2  
C3

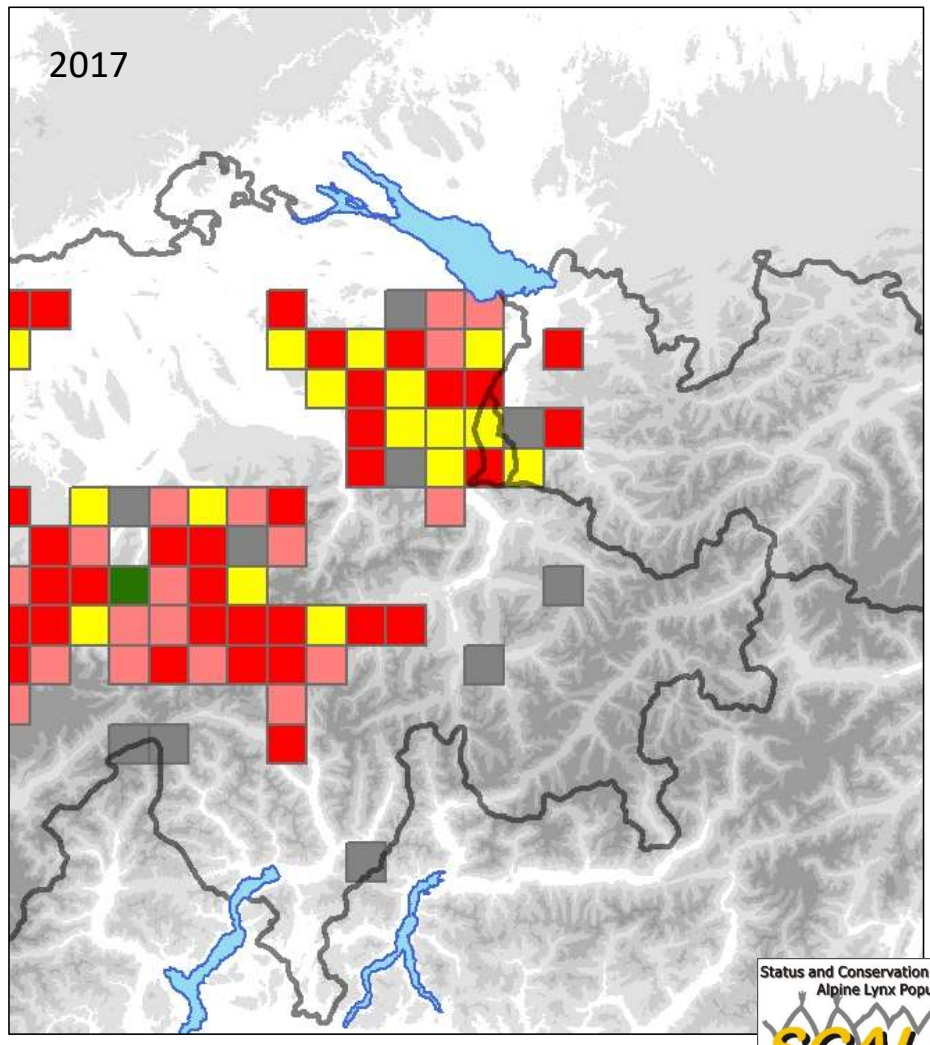
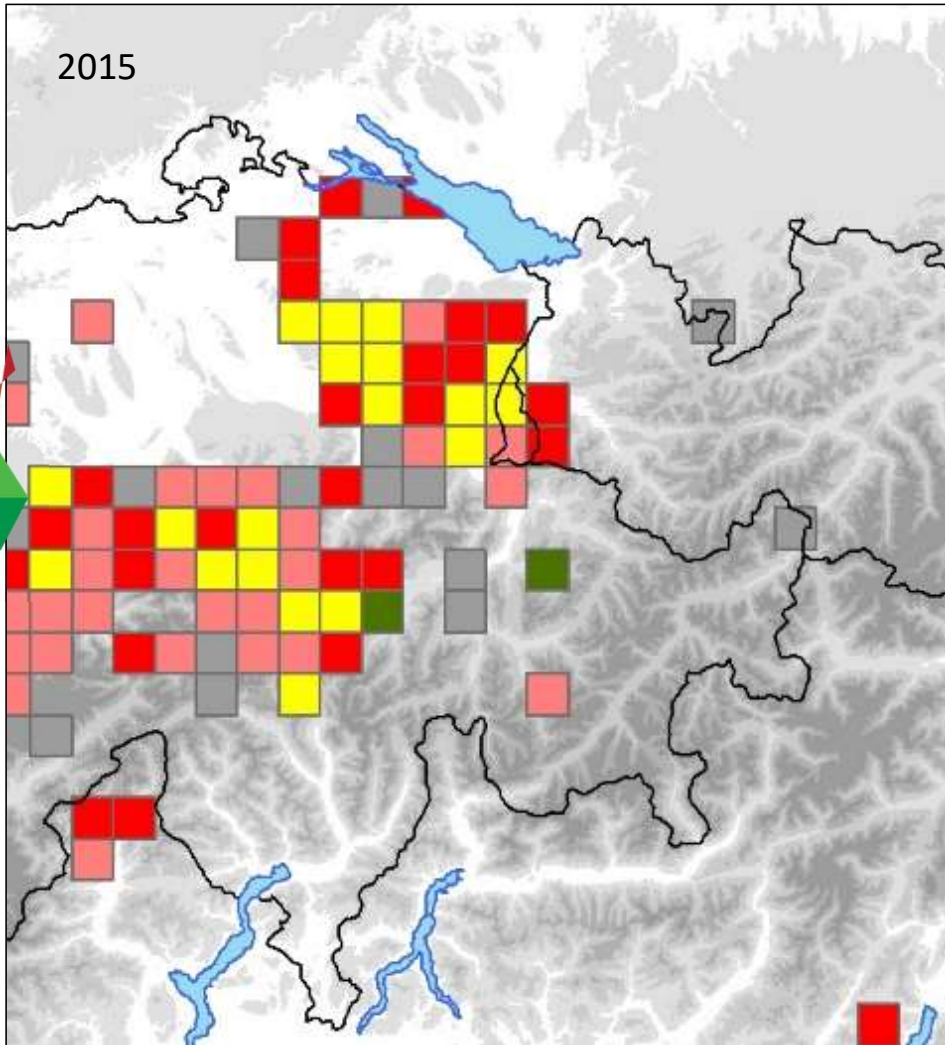
Other  
Lynx  
C1  
C2  
C3



Status and Conservation of the  
Alpine Lynx Population

**SCALP**







Status and Conservation of the  
Alpine Lynx Population

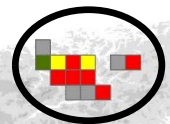
# SCALP

## 2015

Evidence of  
reproduction

C1  
C2  
C3

Other  
signs  
C1  
C2  
C3



Status and Conservation of the  
Alpine Lynx Population

# SCALP

## 2010

Evidence of  
reproduction

C1

Other  
signs

C1

C2

C3

Status and Conservation of the  
Alpine Lynx Population

# SCALP

Status and Conservation of the  
Alpine Lynx Population

**SCALP**

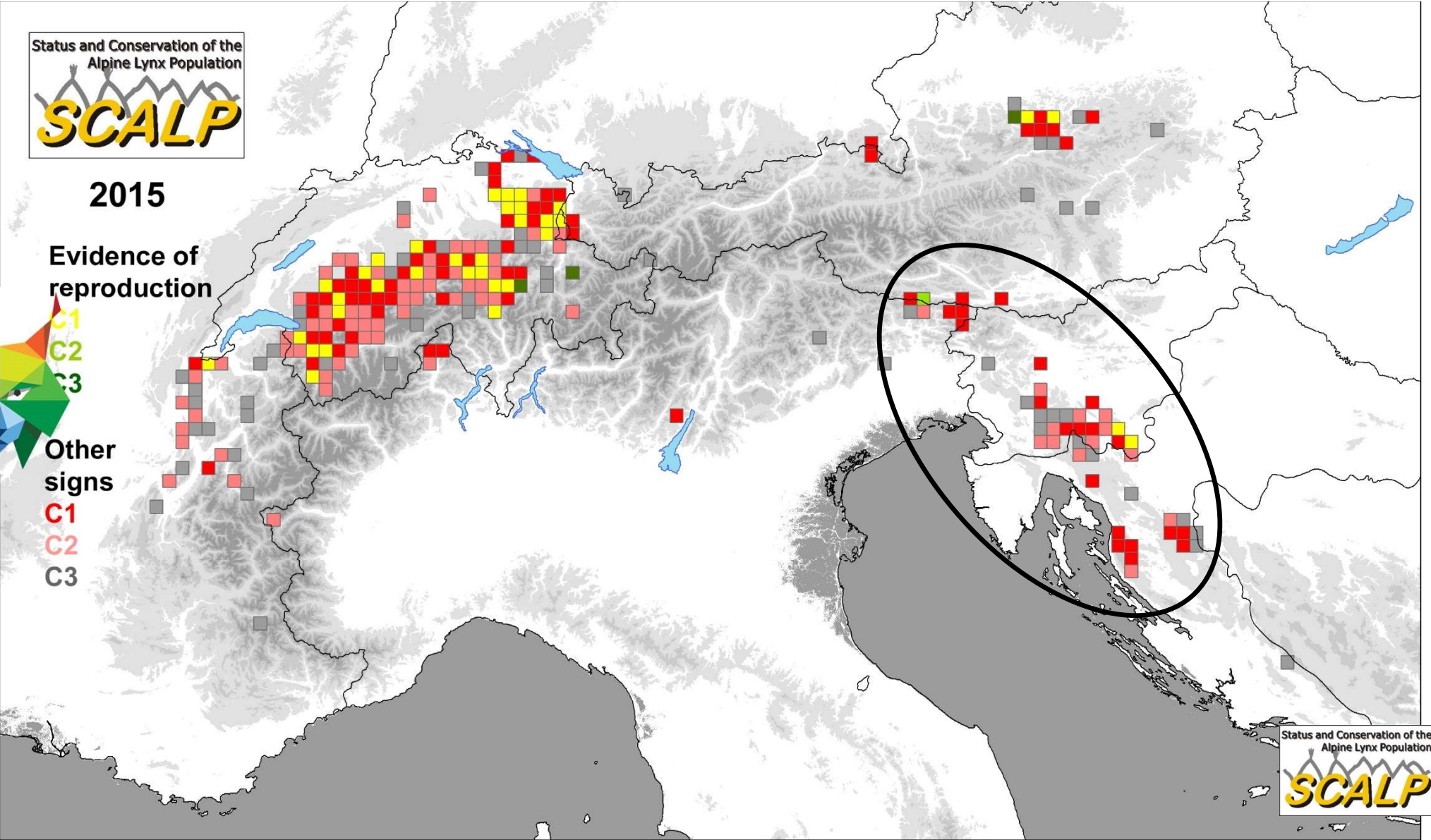
2015

Evidence of  
reproduction

C1  
C2  
C3

Other  
signs

C1  
C2  
C3



Status and Conservation of the  
Alpine Lynx Population

**SCALP**

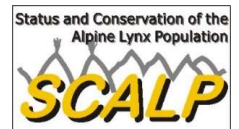


# Conservation durch Bejagung: das Slowenische Wiederansiedlungsprojekt



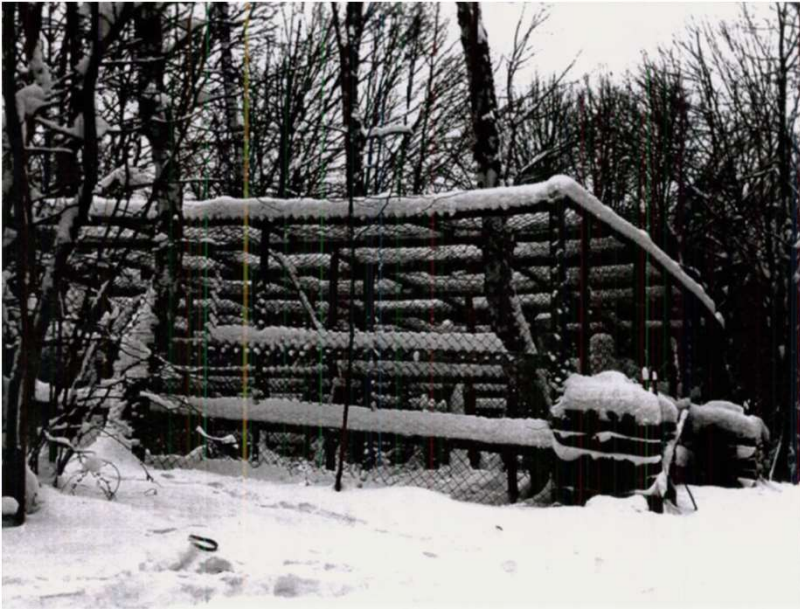
Karl Weber

Jäger, Initiator des Wiederansiedlungsprojekts in Slowenien





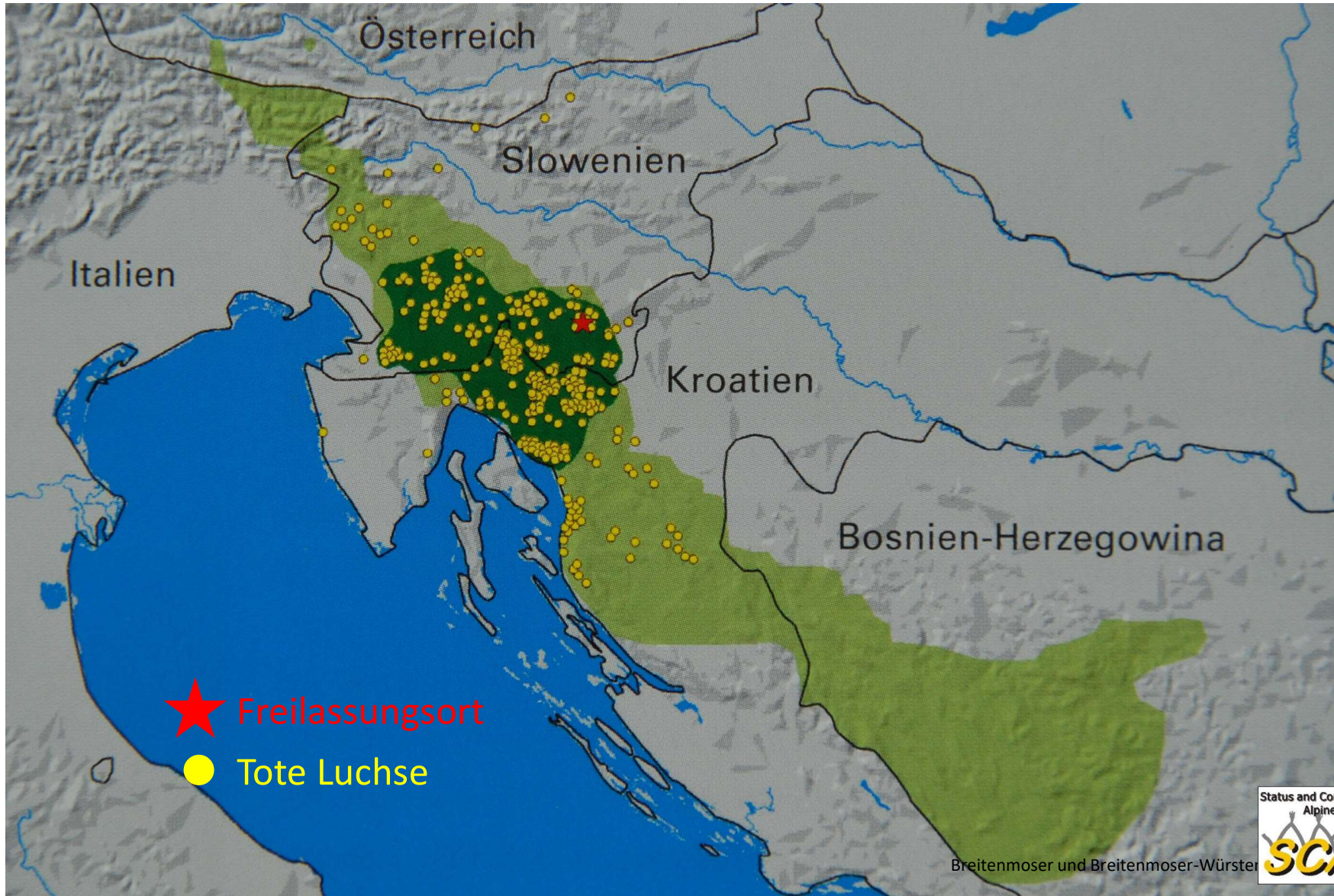
## Wiedereinbürgerung 1973



*Photos from: Čop, 1994*

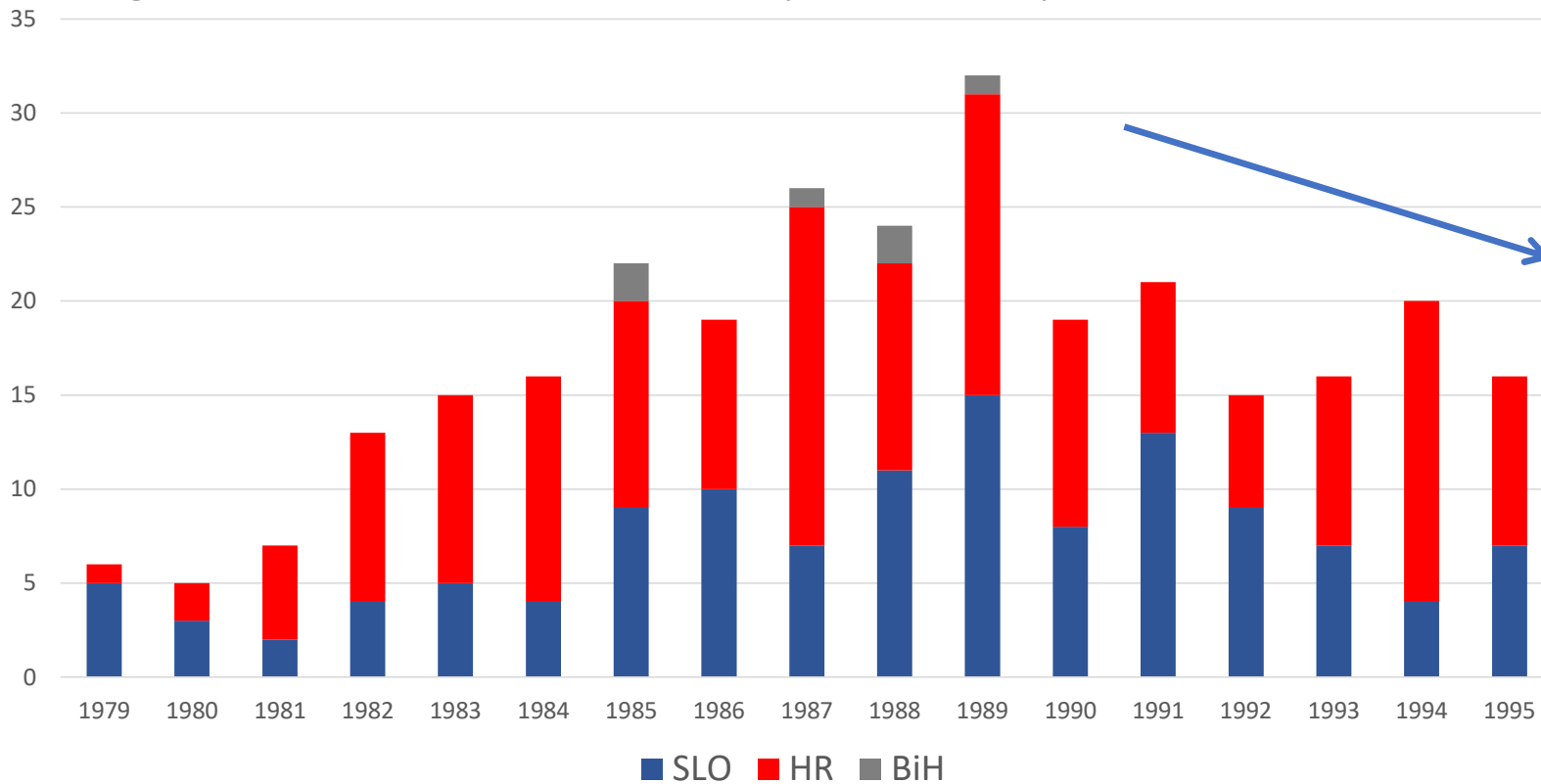
- 3 Luchspaare freigelassen 1973
- 1 Kuder stirbt 1974
- Im ersten Sommer schon 4 Jungluchse nachgewiesen
- Bis 1978 mindestens 31 Jungluchse
- Im Winter 1978/79 Beginn Bejagung (7 Individuen)

1995





# Jagdstrecke in der Dinarischen Population (Čop and Frkovic 1998)

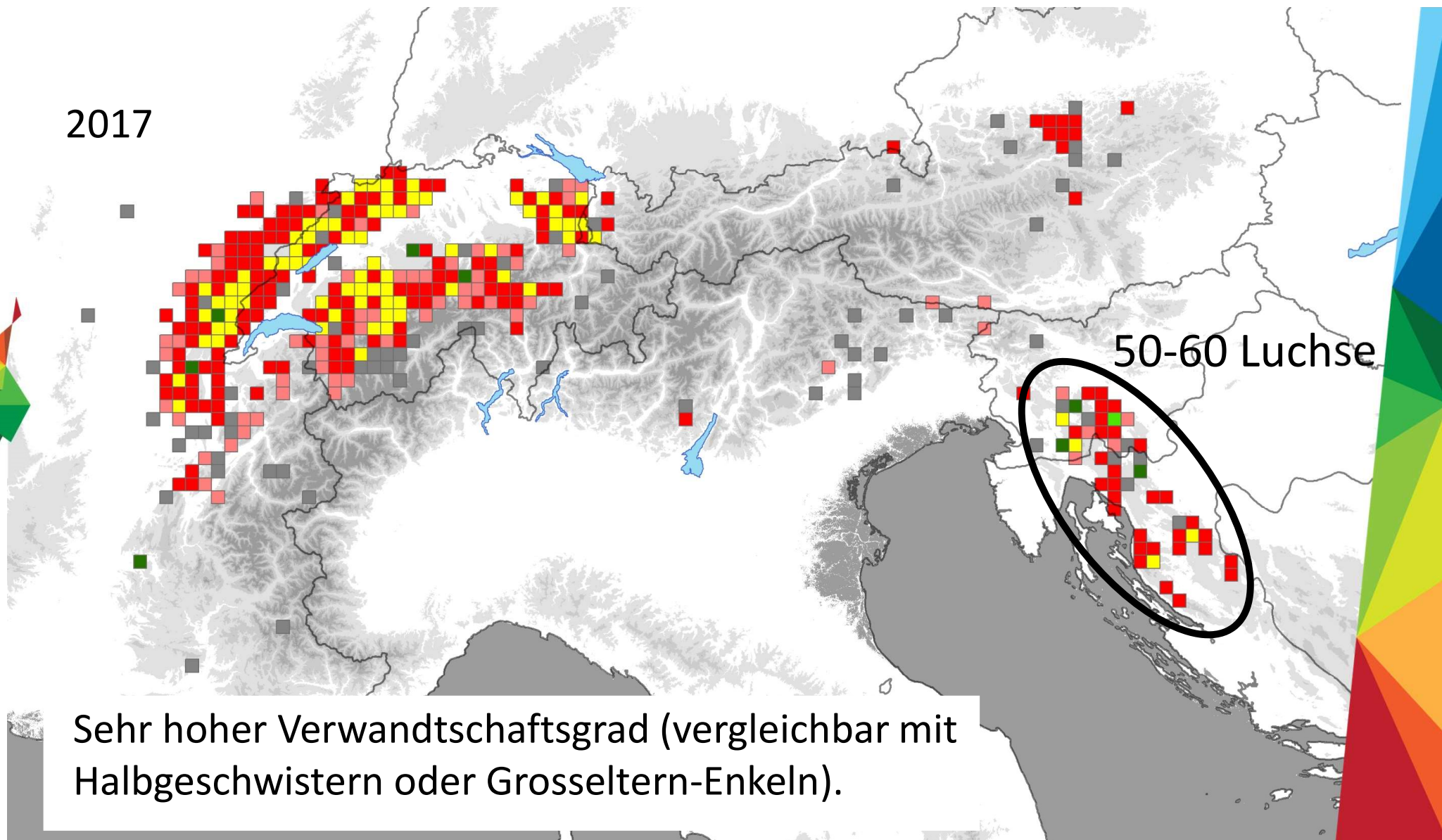


Seit 2004 Bejagung eingestellt





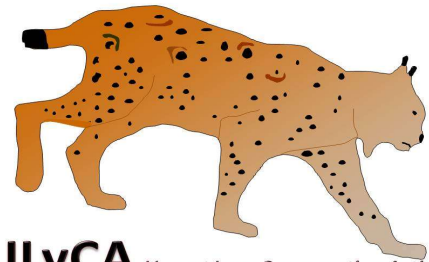
2017





# **Verhindern des Aussterbens des Luchses im Dinarischen Gebirge und in den Südostalpen durch Aufstockungen und Erhaltungsmaßnahmen**

Dauer: 2017-2024



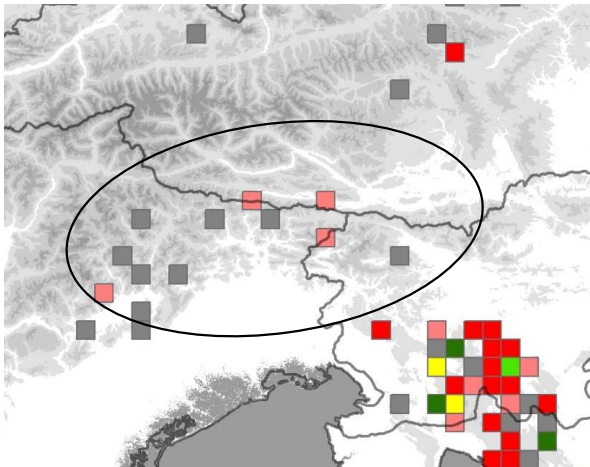
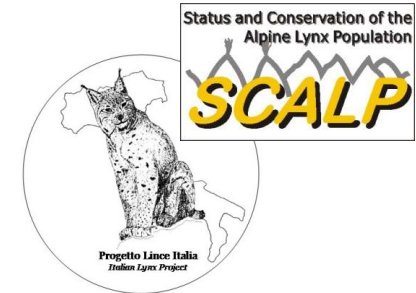
**ULyCA** *Urgent Lynx Conservation Action*



Renato Pontarini

Status and Conservation of the  
Alpine Lynx Population  
**SCALP**

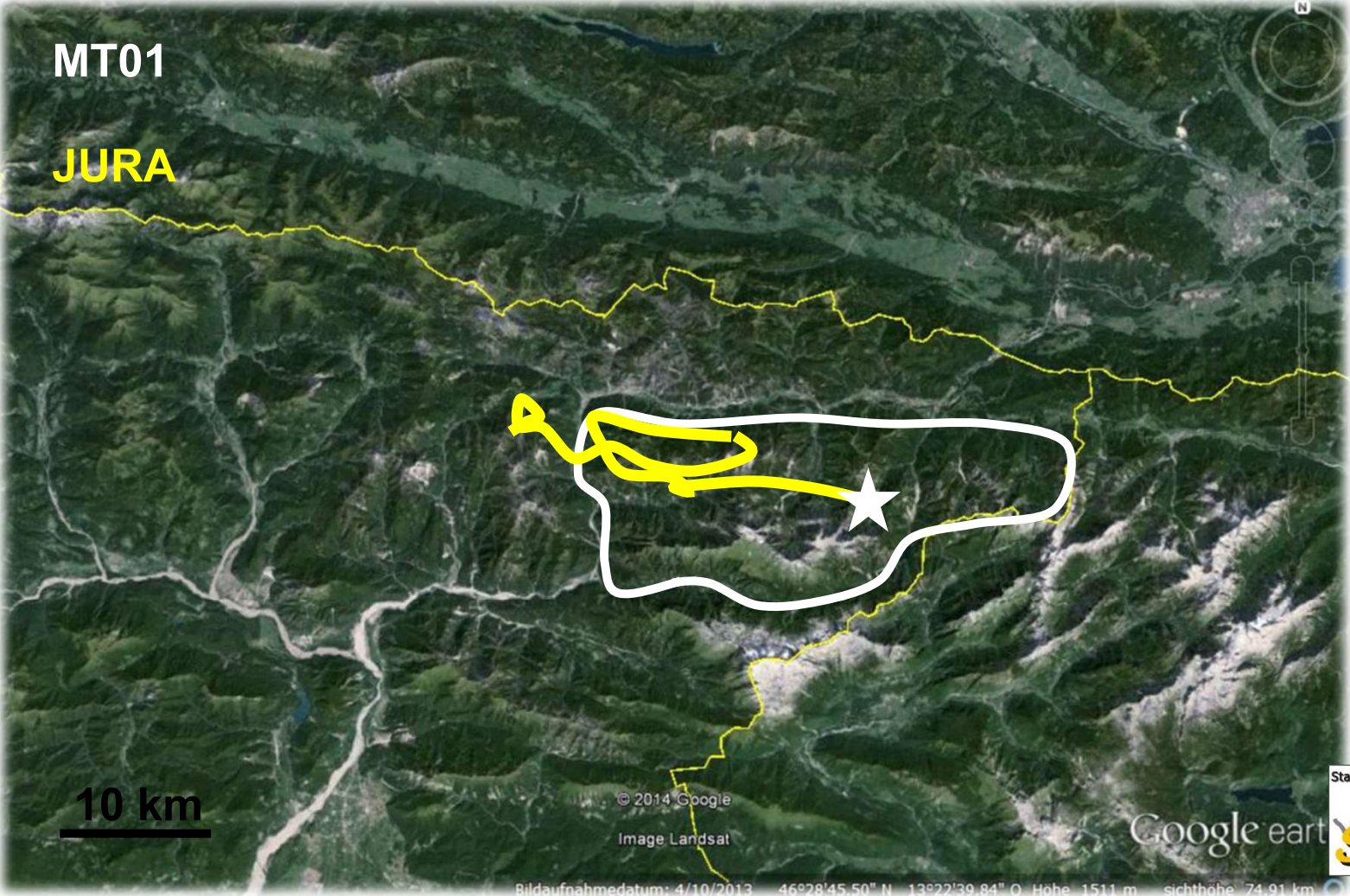




## Verhindern des Aussterbens des Luchses in den Südostalpen



April bis Juli 2014



Bilddatumsdatum: 4/10/2013 46°28'45.50" N 13°22'39.84" O Höhe 1511 m sichthöhe 74.91 km





Status and Conservation of the  
Alpine Lynx Population  
**SCALP**





April bis Juli 2014

MT01

JURA



© 2014 Google  
Image Landsat

Google earth

Status and Conservation of the  
Alpine Lynx Population  
**SCALP**

Bildaufnahmedatum: 4/10/2013 46°28'45.50" N 13°22'39.84" O Höhe 1511 m sichthöhe 74.91 km



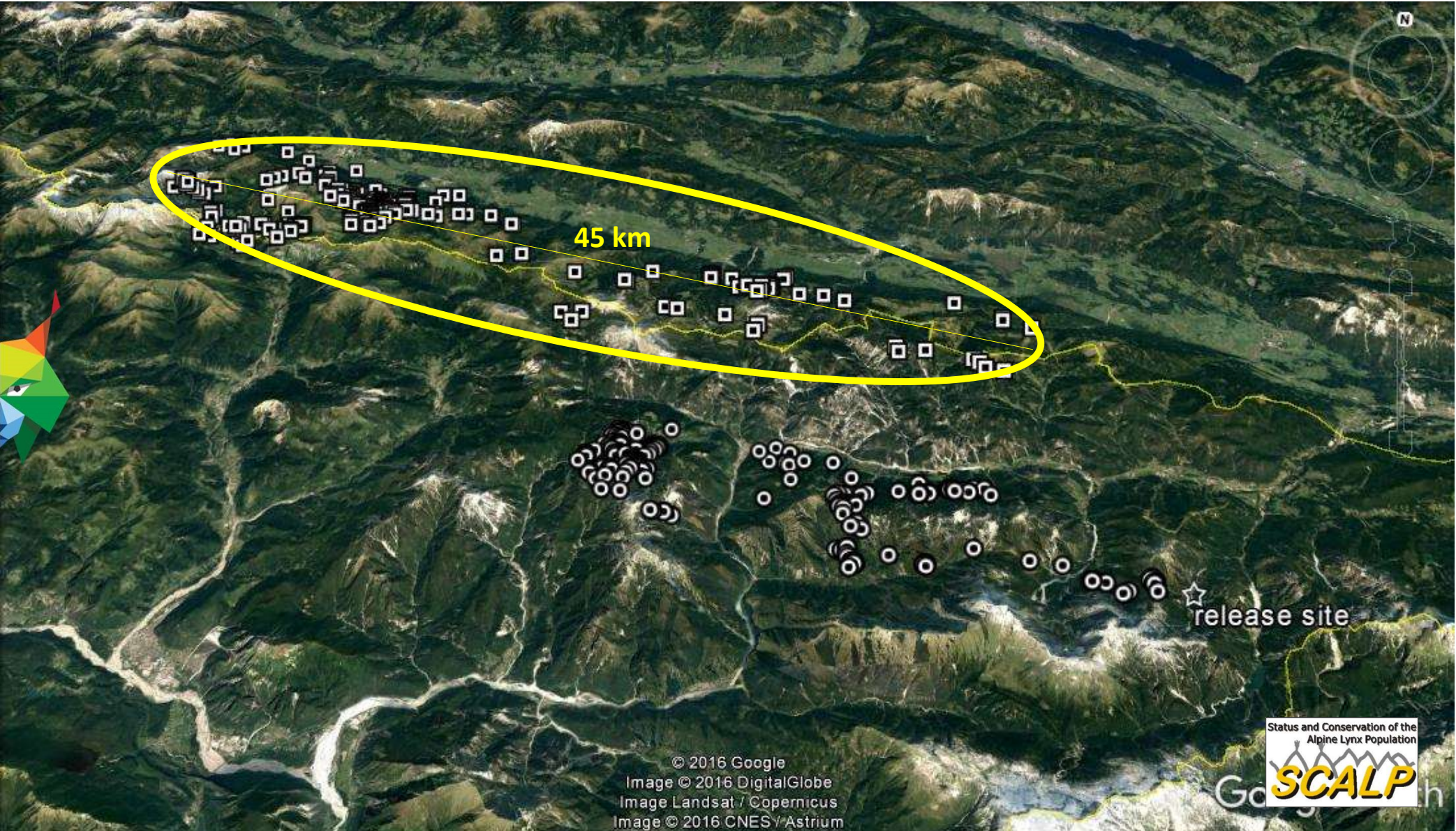
März 2016



Renato Pontarini

Status and Conservation of the  
Alpine Lynx Population  
**SCALP**





45 km

release site

Status and Conservation of the  
Alpine Lynx Population

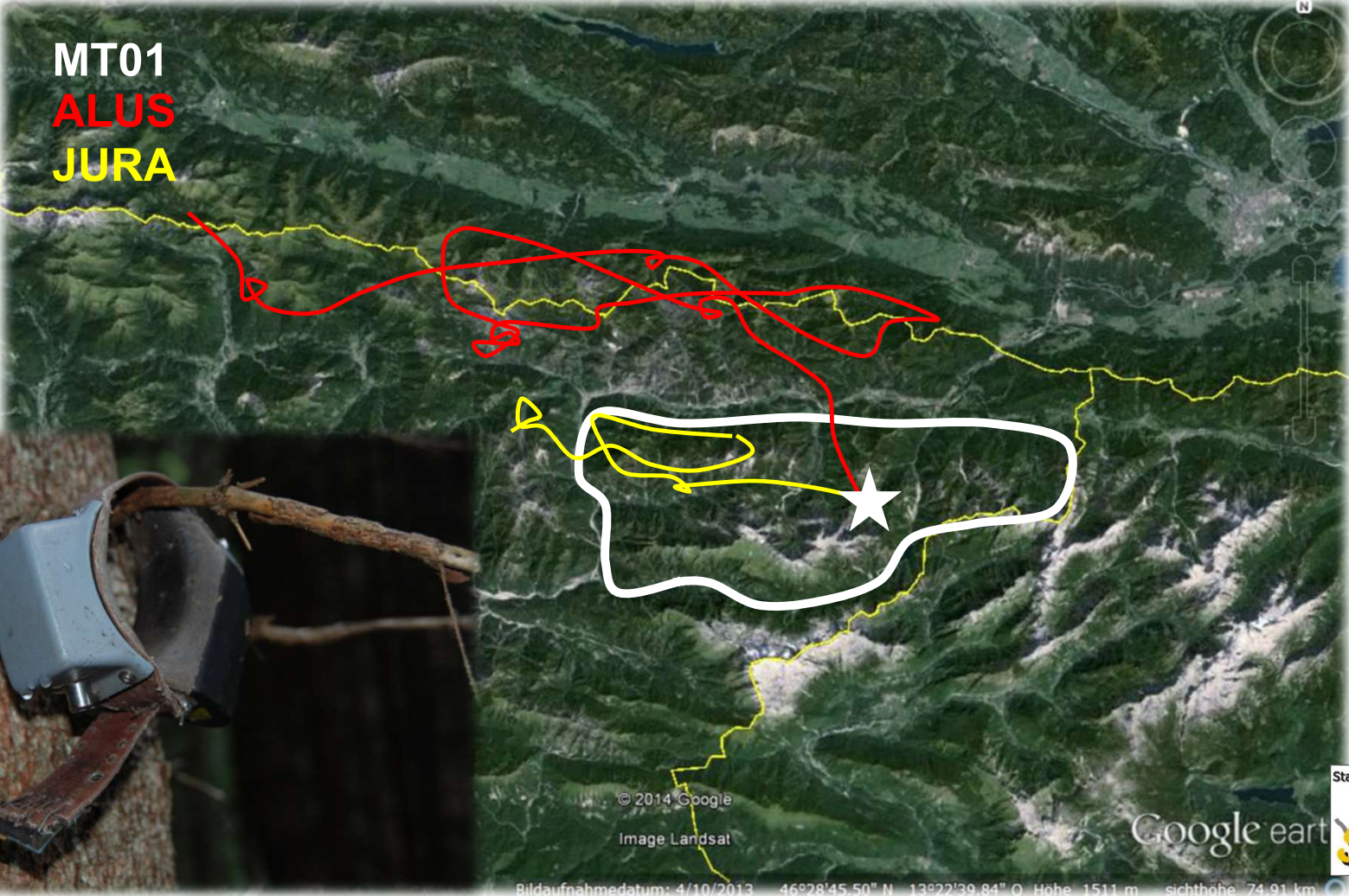
Go **SCALP** h

© 2016 Google  
Image © 2016 DigitalGlobe  
Image Landsat / Copernicus  
Image © 2016 CNES / Astrium



April bis Juli 2014

MT01  
ALUS  
JURA



ALUS

März 2015

140 km







- 2 Länder: IT, CH
- Start: März 2013
- Ziel: 3 Luchse

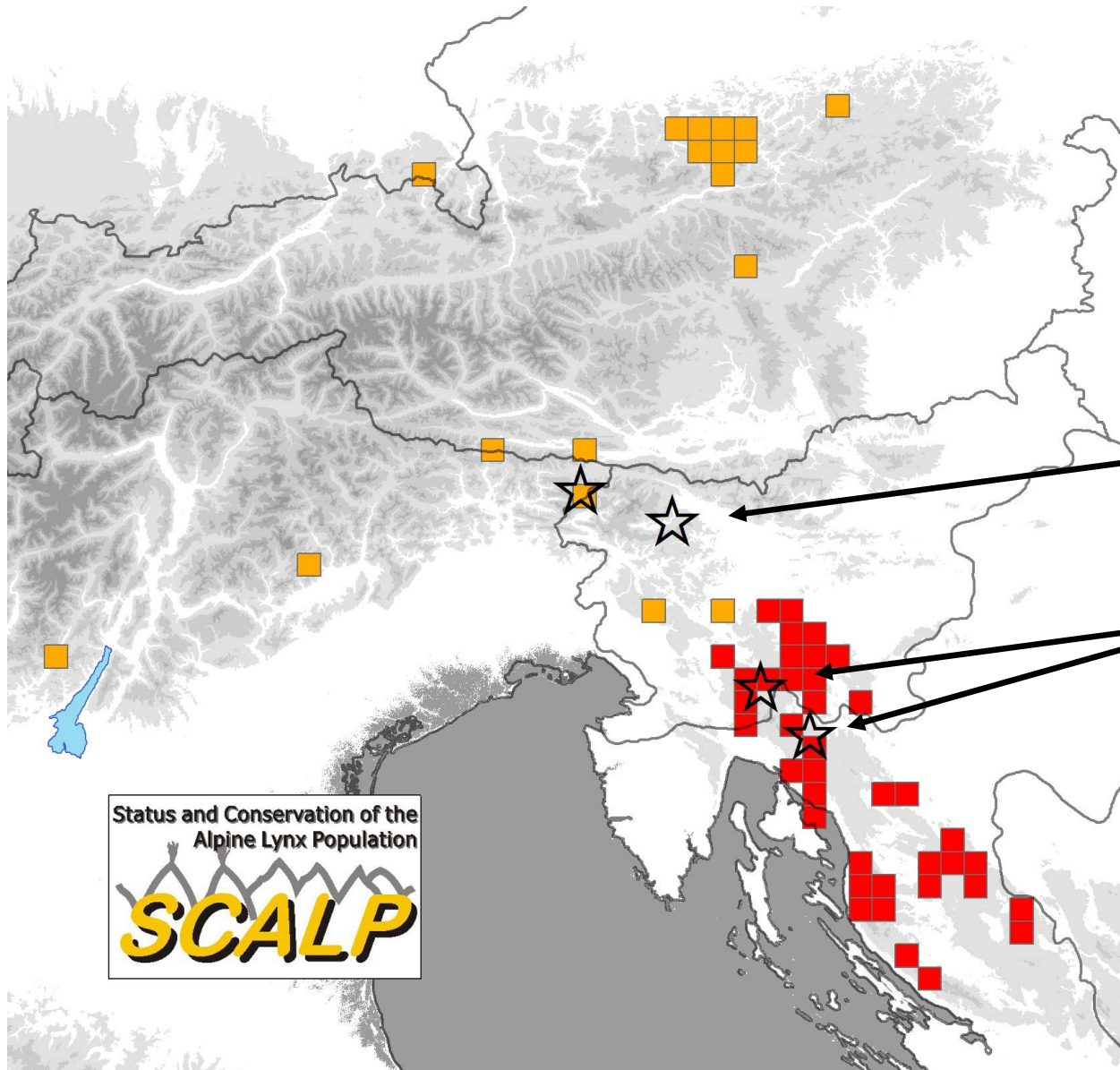


- 5 Länder: SI, HR, IT, RO, SK
- Start: Juni 2017
- Ziel: 14 Luchse









5 Luchse

9 Luchse

★ Freilassungsorte



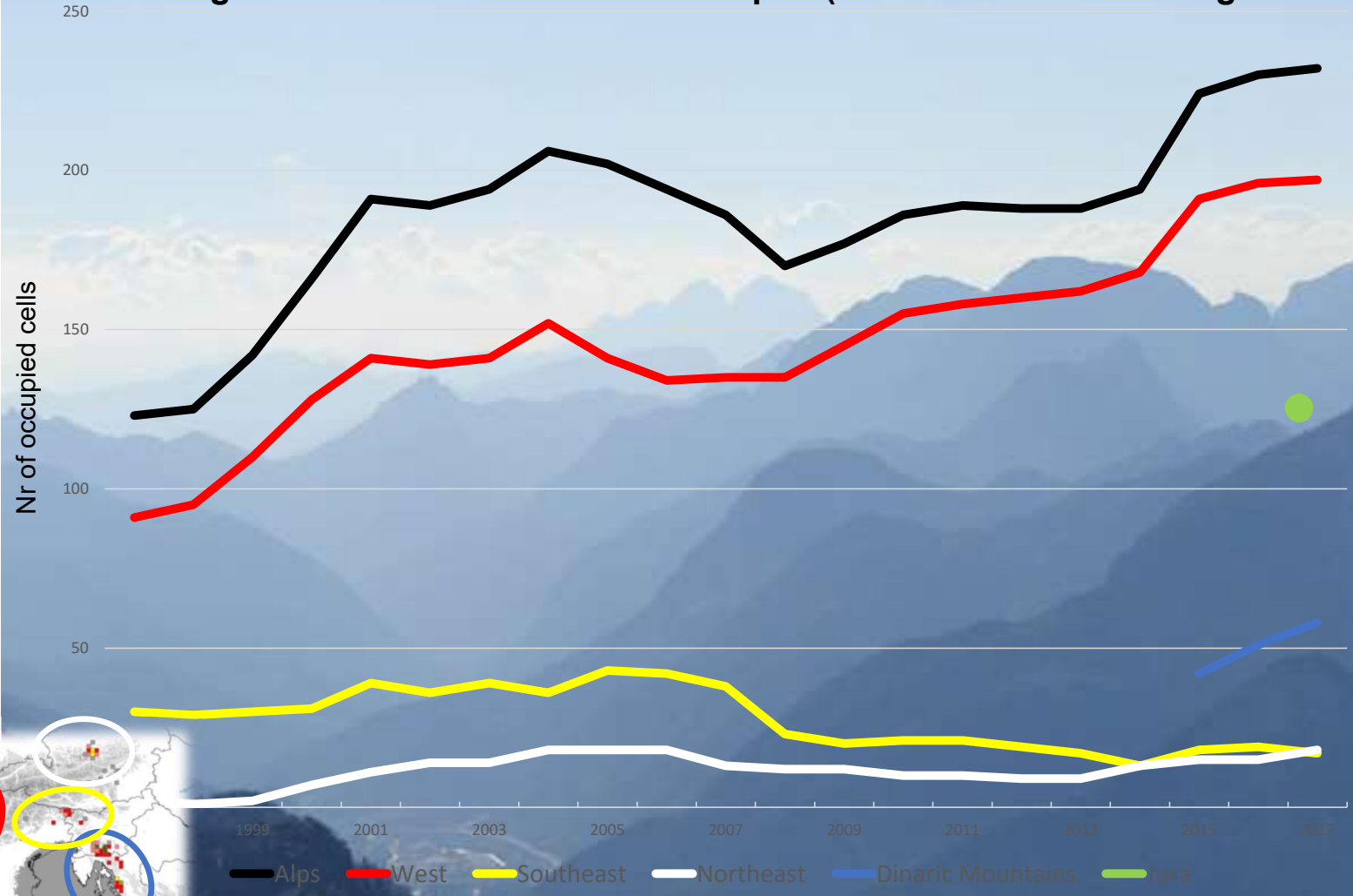




[www.lifelynx.eu](http://www.lifelynx.eu)



# Entwicklung der Luchsvorkommen in den Alpen (und Dinarischem Gebirge / Jura)







1. Woher kommen wir?

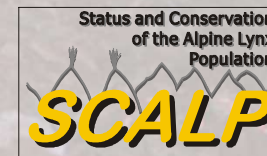
→ *Geschichte*

2. Wo stehen wir heute?

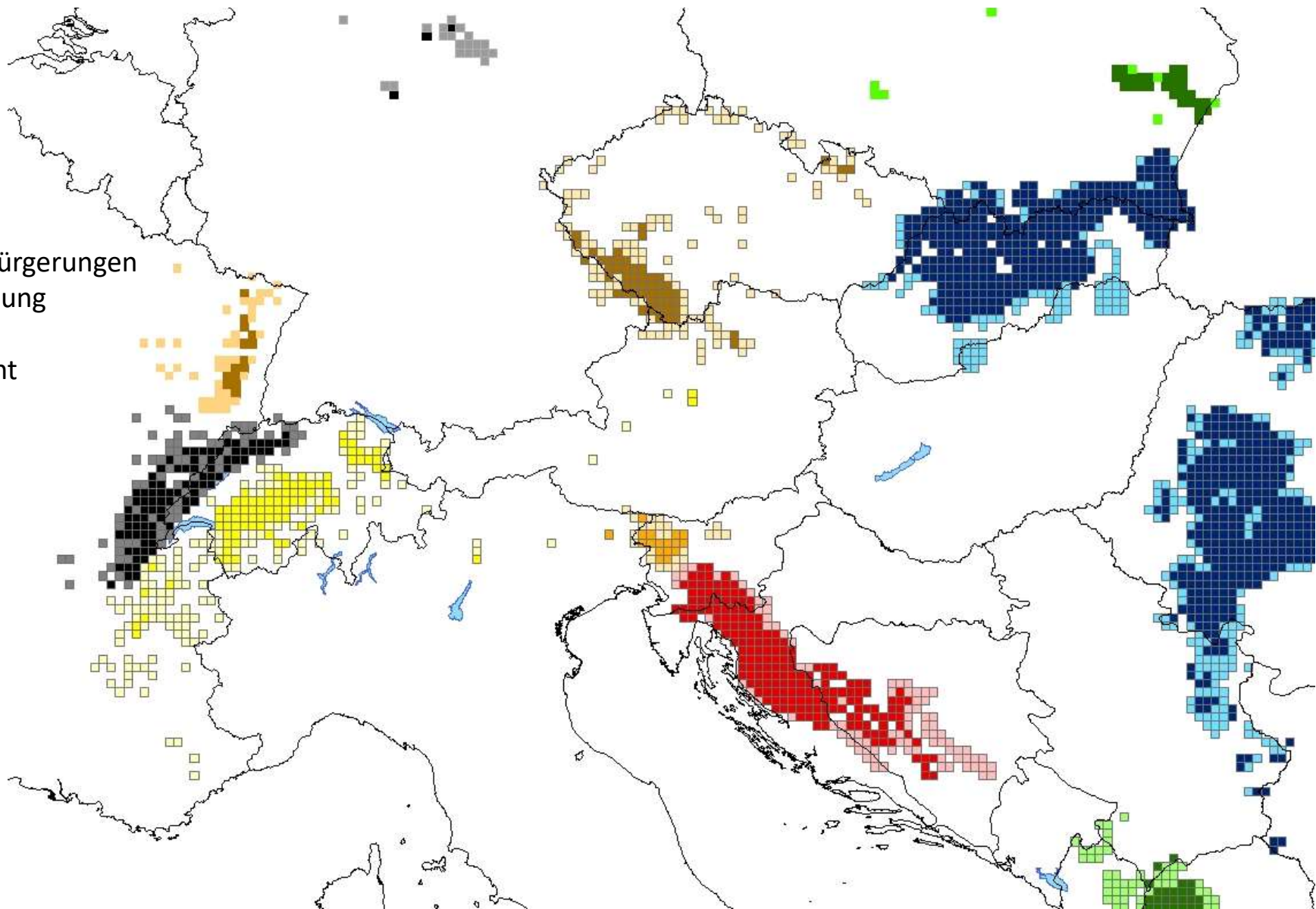
→ *Aktuelle Situation des Luchses in den Alpen*

3. Wohin wollen wir?

→ *Diskussion*



1970s Wiedereinbürgerungen  
1980s Erste Forschung  
1990s Monitoring  
2000s Management





# Probleme / Herausforderungen



Allgemein verbessert



Hohe Verfügbarkeit



überschaubar



Regional wichtig



## Anzahl gerissene Haustiere in den Alpen



Luchs	Schadenfälle	Kosten €
Frankreich	72	20.000
Schweiz	21-30	6.000-25.000
Deutschland	Keine	
Österreich	Keine	
Italien	Keine	
Slowenien (ganzes Land)	11-67	1.400-8.500



## Anzahl gerissene Haustiere in den Alpen (2012-16)



Luchs	Schadenfälle	Kosten €	Prävention €
Frankreich (ganzes Land)	72	20.000	(5.000.000)
Schweiz	21-30	6.000-25.000	(600.000)
Deutschland	Keine		
Österreich	Keine		
Italien	Keine		
Slowenien (ganzes Land)	11-67	1.400-8.500	(60.000)



Frankreich	Schadenfälle	Kosten €
Luchs	72	20.000
Wolf	7484	2.327.825

# Probleme / Herausforderungen



Allgemein verbessert



Habitat



Beute

Hohe Verfügbarkeit



Konflikte mit der Landwirtschaft

überschaubar



S. Hofer

Unmittelbare Bedrohung



Konflikte mit der Jagd

Regional wichtig



Fragmentation



# Probleme / Herausforderungen



Allgemein verbessert



überschaubar

Unmittelbare Bedrohung



Hohe Verfügbarkeit

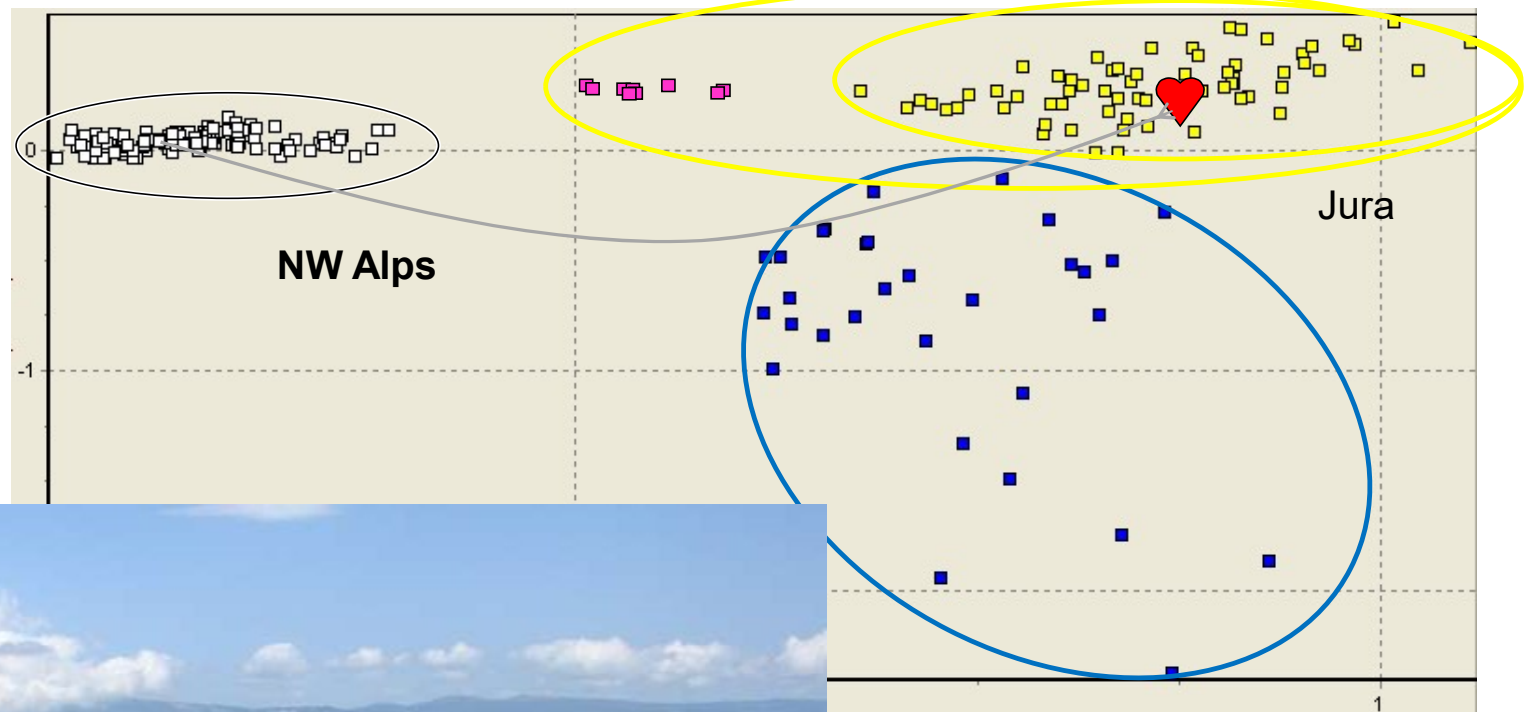


Regional wichtig



Langfristige Bedrohung

# Genetische Drift verglichen mit der Karpatenpopulation





# Umsiedlungen

(seit 2000)

## Harz

2000-2006: 24 Luchse

## LUNO (Nordostschweiz)

2001-2009: 12 Luchse

## Kalkalpen

2011-2017: 5 Luchse

## ULyCA (Urgent Lynx Conservation Action)

2014: 2 Luchse

## LIFE Luchs Pfälzerwald

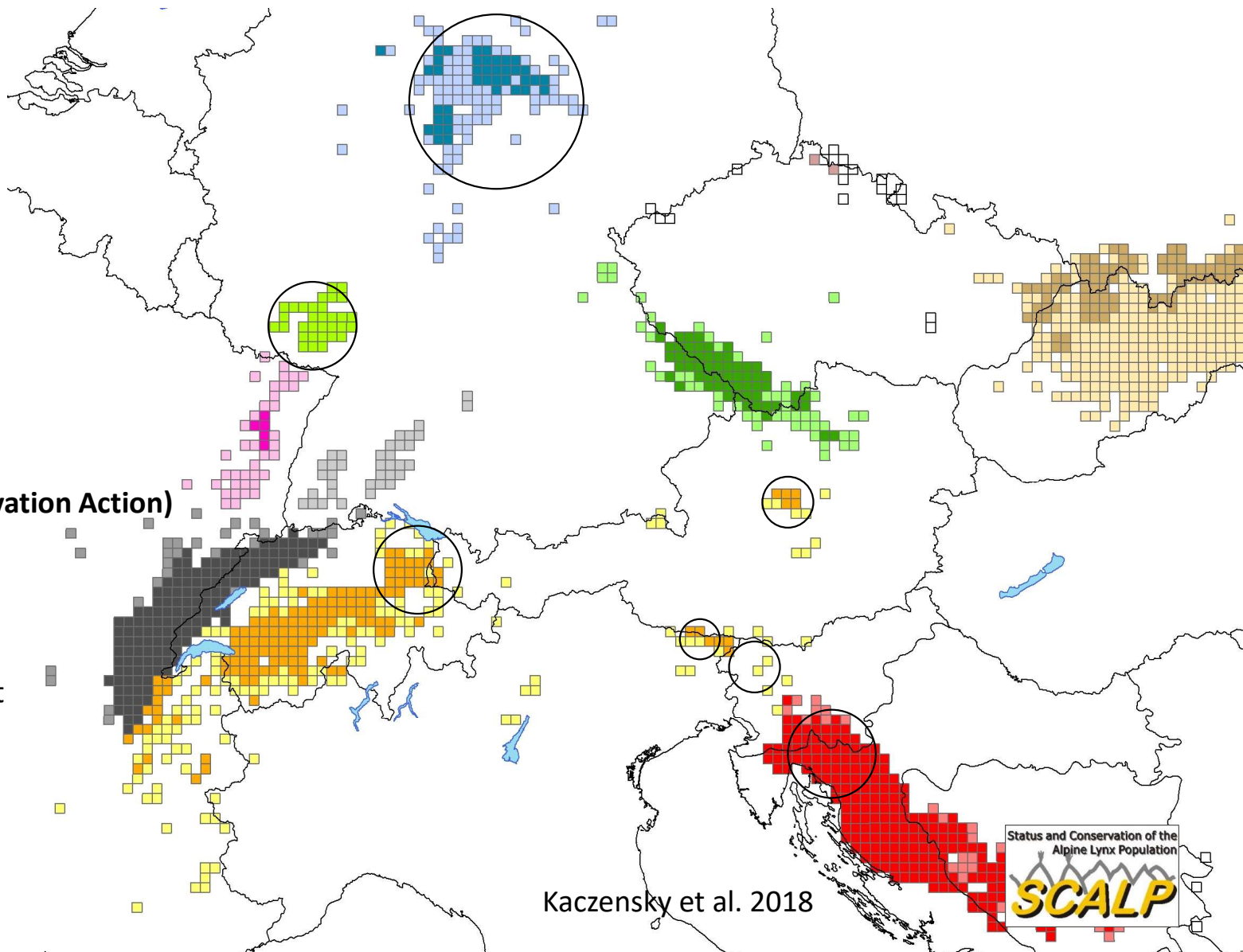
2016-2019: 16 Luchse

2019-2021: 4 Luchse geplant

## LIFE Lynx

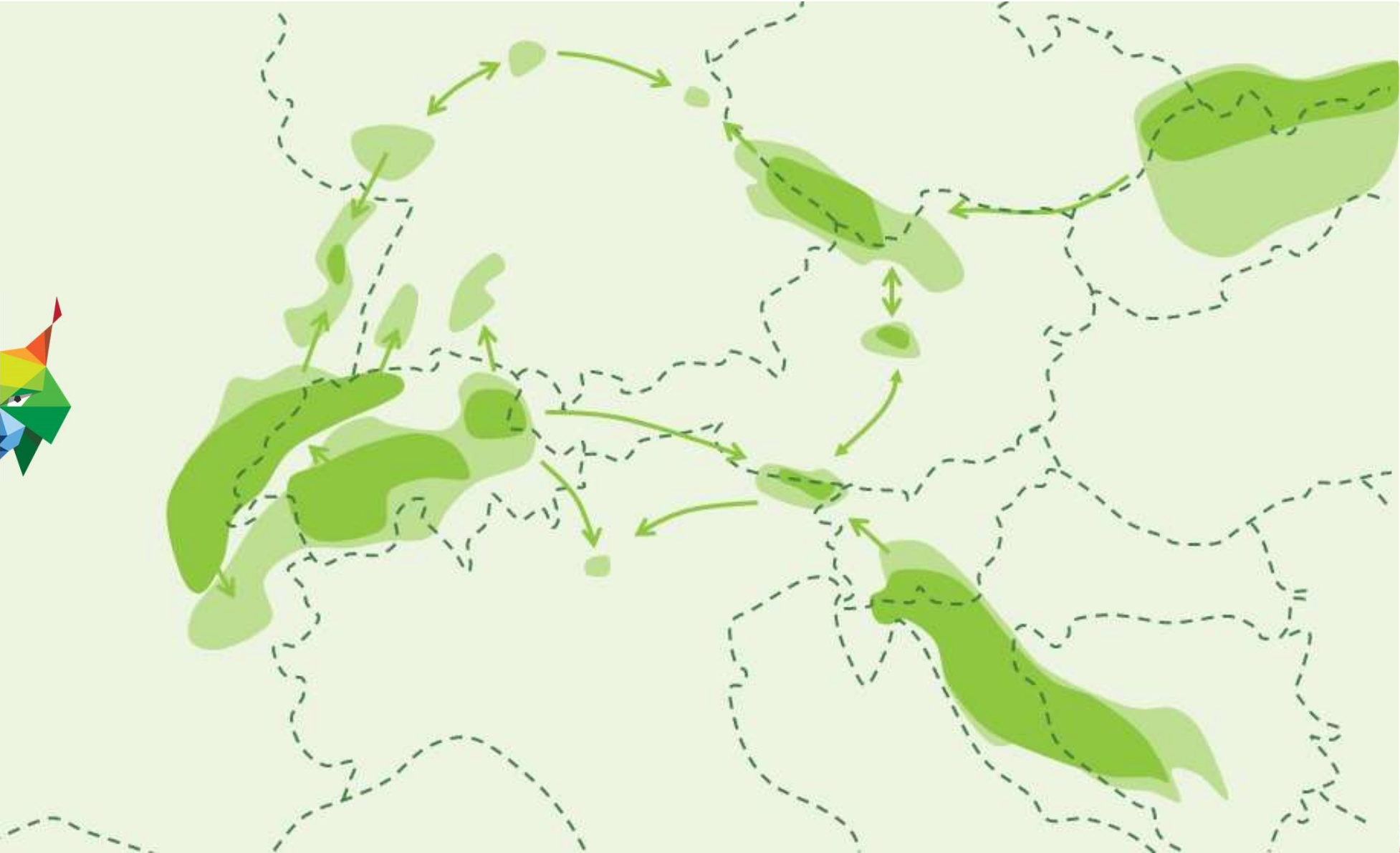
2019: 2 Luchse

2020-2023: 12 Luchse















Anja Jobin

Die Luchse in Mitteleuropa brauchen aktives Management